

# FORDØJELSESSYSTEMET

## INTRODUKTION



ANATOMI



AARHUS  
UNIVERSITET  
INSTITUT FOR ODONTOLOGI OG ORAL SUNDHED

HENRIK LØVSCHALL  
LEKTOR, PHD, TANDLÆGE



# Digestive System

## ACCESSORY ORGANS:

### Salivary glands

- Saliva moistens food
- Bicarbonate maintains pH
- Amylase digests starch
- Lysozyme inhibits bacteria

### Liver

- Produces bile
- Performs various functions associated with processing and storing nutrients

### Gall bladder

- Stores and concentrates bile

### Pancreas

- Secretes digestive enzymes into small intestine
- Secretes bicarbonate into small intestine to neutralize stomach acid

## ORGANS:

### Mouth

- Teeth chew food
- Tongue positions and tastes food

### Pharynx

- Passageway for food and air
- Participates in swallowing

### Esophagus

- Moves food from pharynx to stomach

### Stomach

- Stores and mixes food
- Begins chemical digestion of protein by enzymes and acid
- Regulates delivery to the small intestine

### Large intestine

- Absorbs nutrients
- Stores waste material

### Small intestine

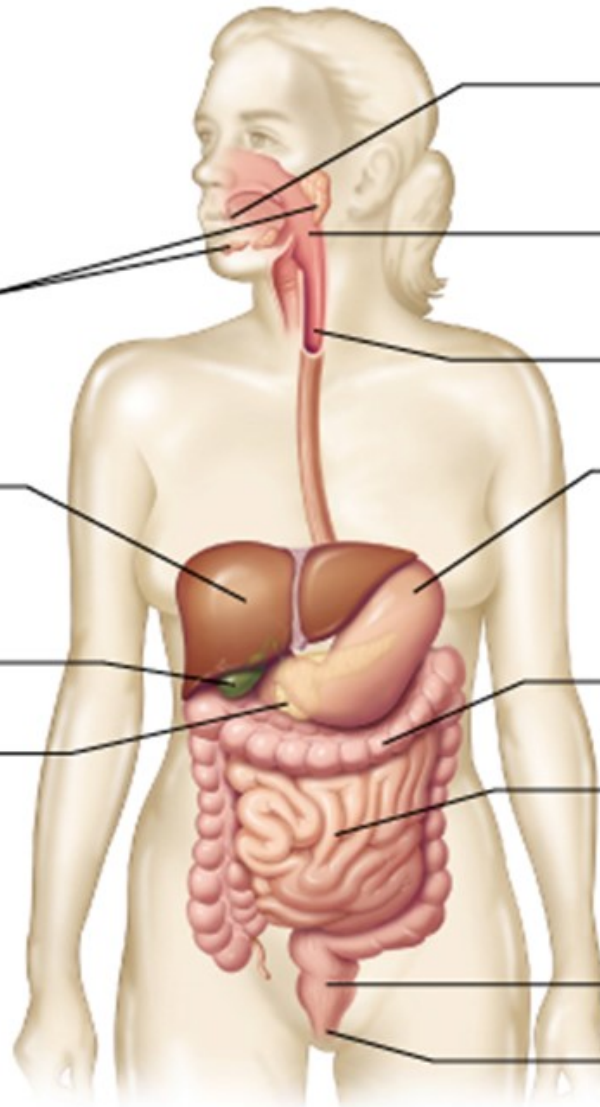
- Digests proteins, fats, and carbohydrates
- Absorbs most of the nutrients
- Secretes digestive hormones and enzymes

### Rectum

- Passageway for feces

### Anus

- Expells undigested material



# FORDØJELSESSYSTEMET



## APPARATUS DIGESTORIUS:

- Fordøjelseskanalen
- Kirtler

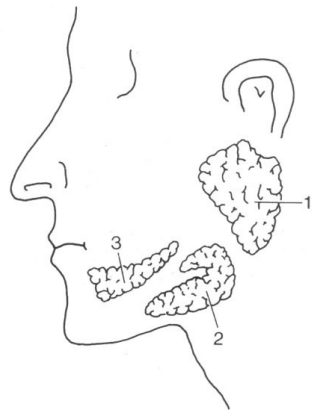


FIG. 2

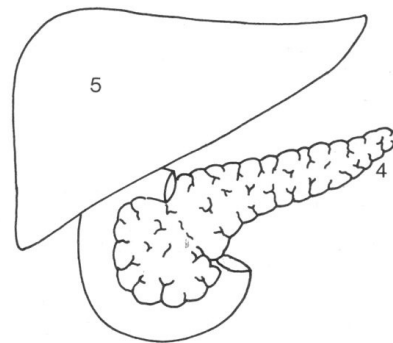


FIG. 3

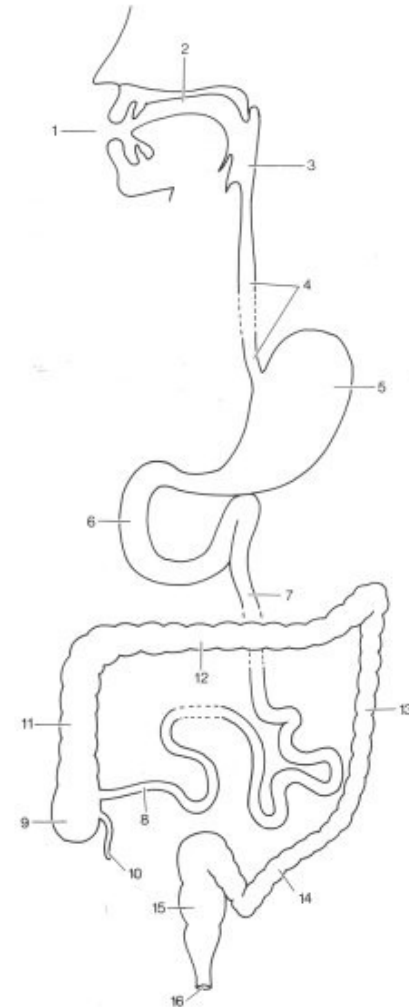


FIG. 1

# FORDØJELSESKANAL



- Spiserøret
- Mavesækken
- Tyndtarmen
- Tyktarmen

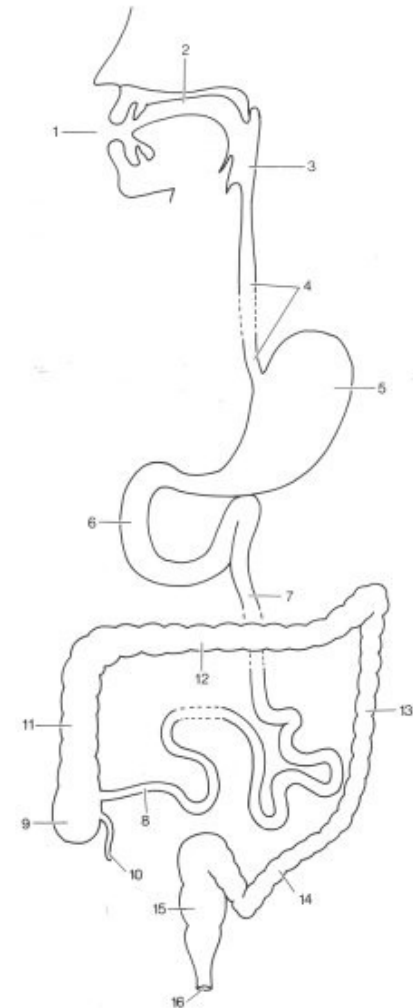
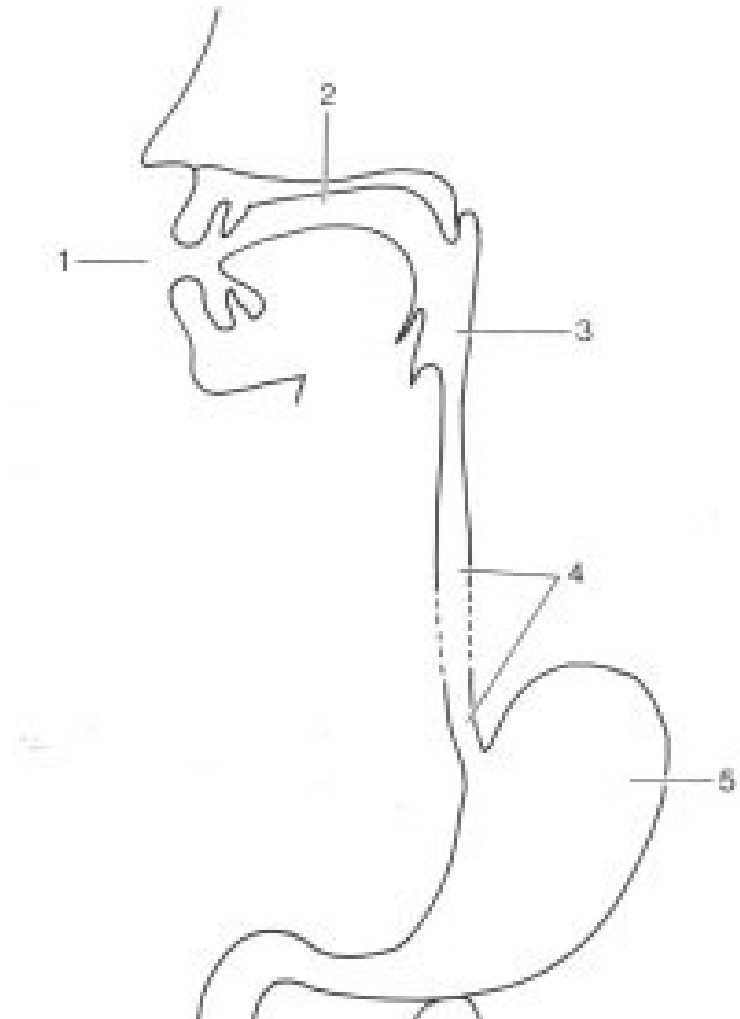


FIG. 1

# FORDØJELSESKANALEN



- rima oris (mundspalten)
- cavitas oris (mundhulen)
- pharynx (svælget)
- oesophagus (spiserøret)
- gaster (mavesækken)

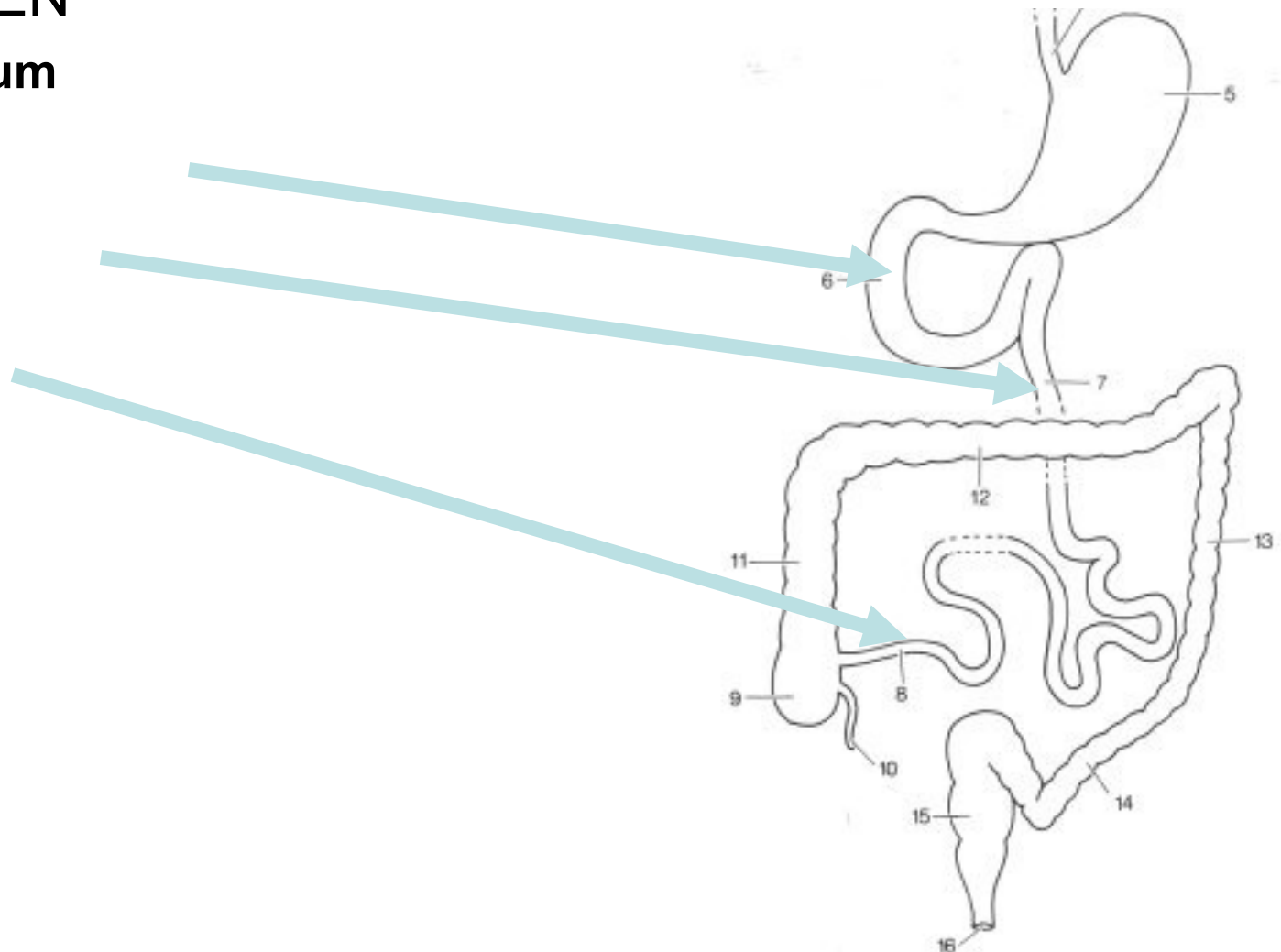


# FORDØJELSESKANALEN



## TYNDTARMEN

- duodenum
- jejunum
- ileum



# FORDØJELSESKANALEN



## TYNDTARMEN

- uden krø• **duodenum** tolvfingertarmen, første afsnit
- med krø• **jejunum** den tomme tarm, første 2/5 afsnit• **ileum** den snoede tarm, sidste 3/5 afsnit

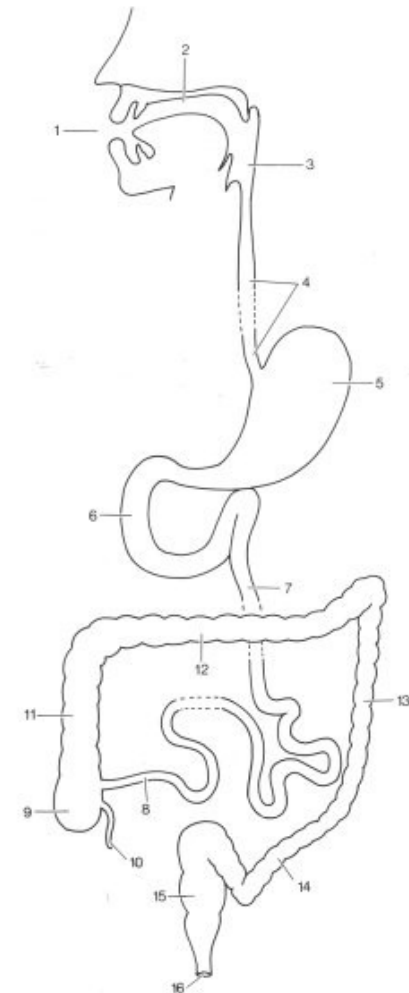


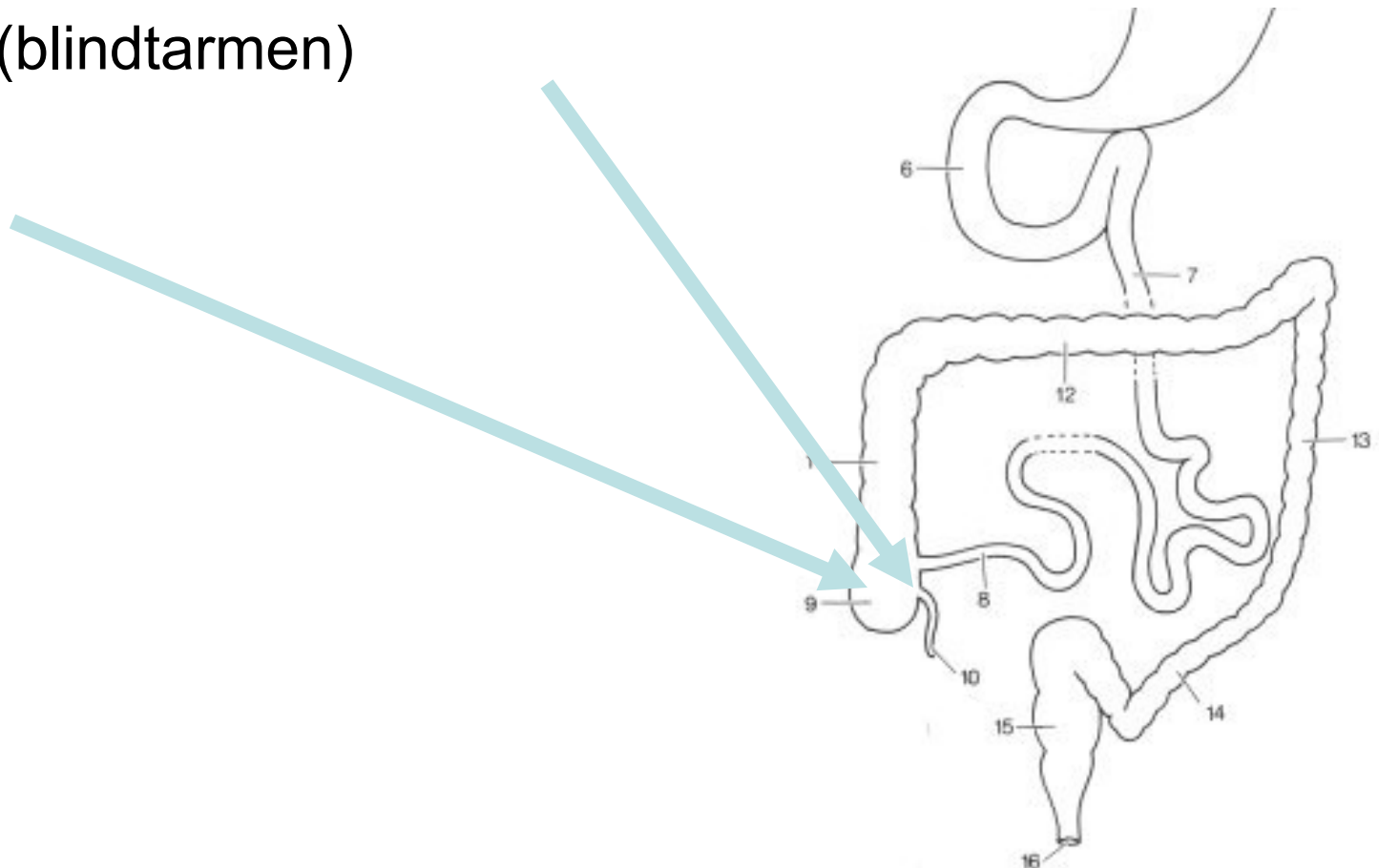
FIG. 1

# FORDØJELSESKANALEN



## TYKTARMEN

- appendix vermiformis
- coecum (blindtarmen)



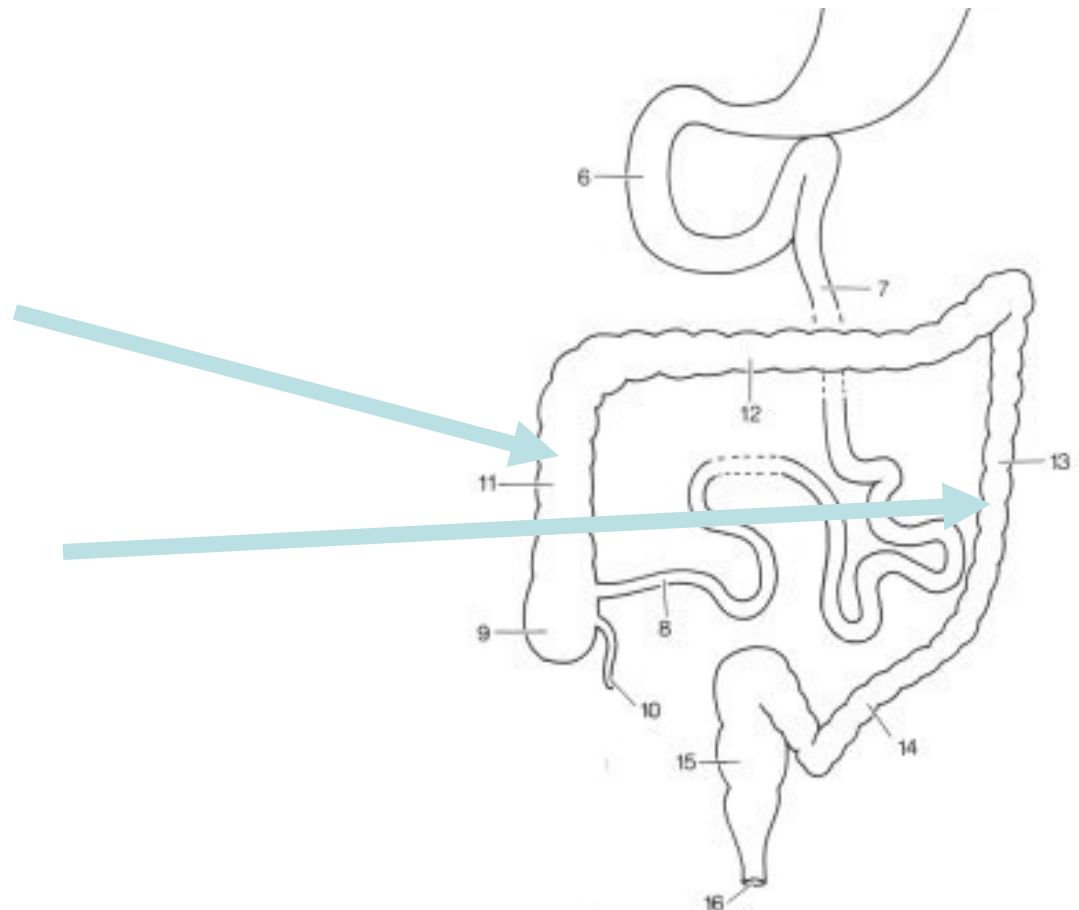


# FORDØJELSESSYSTEMET



## TYKTARMEN

- coecum
- appendix vermiformis
- colon ascendens
- colon transversum
- colon descendens

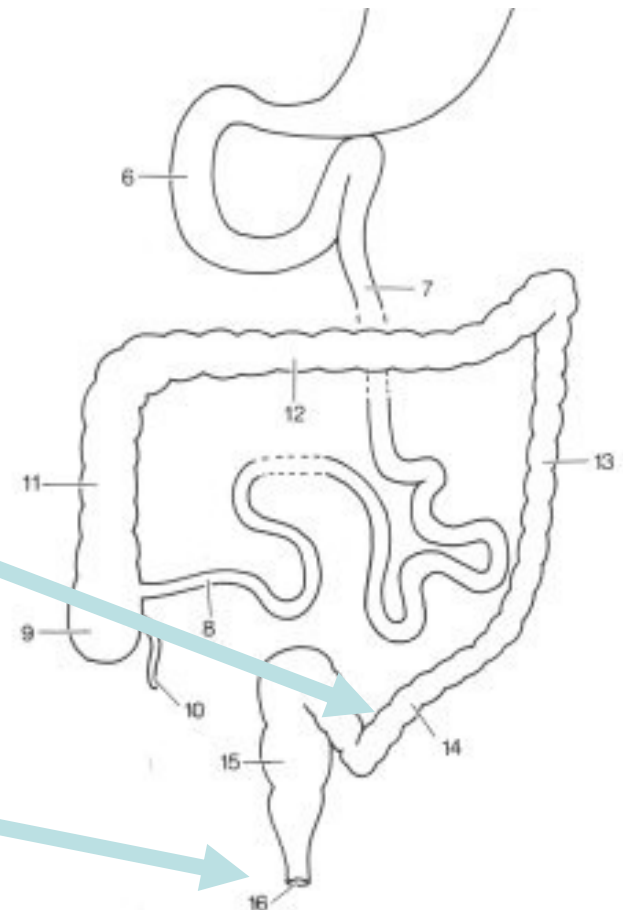


# FORDØJELSESSYSTEMET



## TYKTARMEN

- coecum
- appendix vermiformis
- colon ascendens
- colon transversum
- colon descendens
- colon sigmoideum
- rectum (endetarm)
  - canalis analis
- anus (endetarmsåbning)



# FORDØJELSESSYSTEMET



## KIRTLER

- Tre store spytkirtler
  - gl parotidea
  - gl sublingualis
  - gl submandibularis
- Lever (hepar)
- Bugspytkirtel (pancreas)

