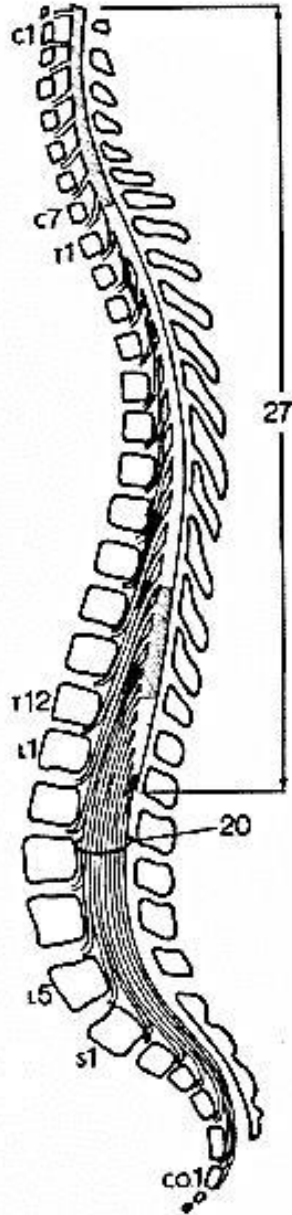


medulla spinalis

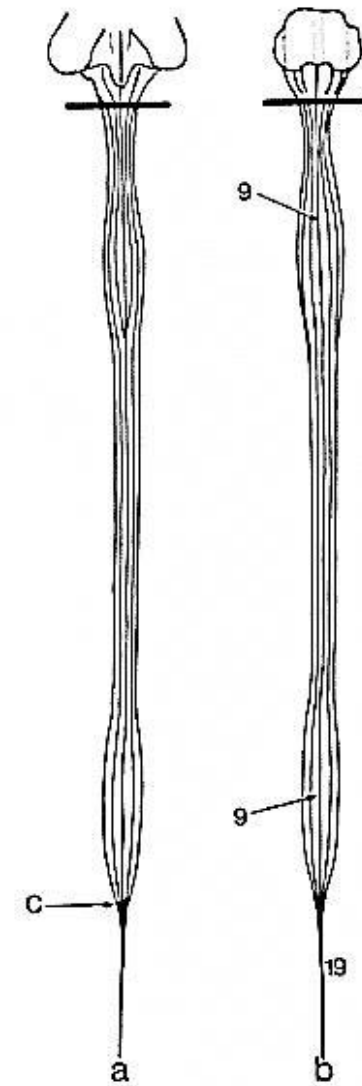
medulla spinalis

- Medulla spinalis er en direkte forlængelse af medulla oblongata
- Medulla spinalis begynder efter foramen magnum

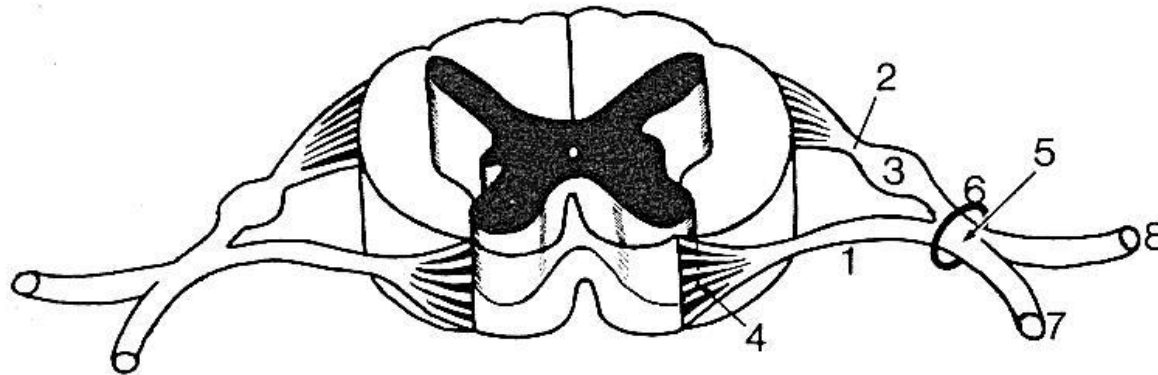
medulla spinalis



- gennemløber columna vertebralis i canalis vertebralis omgivet af hjernehinder
- fra C1 (atlas) til overkanten af L2 (27)
- inddeles i 31 segmenter, hvor hvert segment (skive) indeholder ét stk. medulla spinalis + ét par nn. spinalis



medulla spinalis



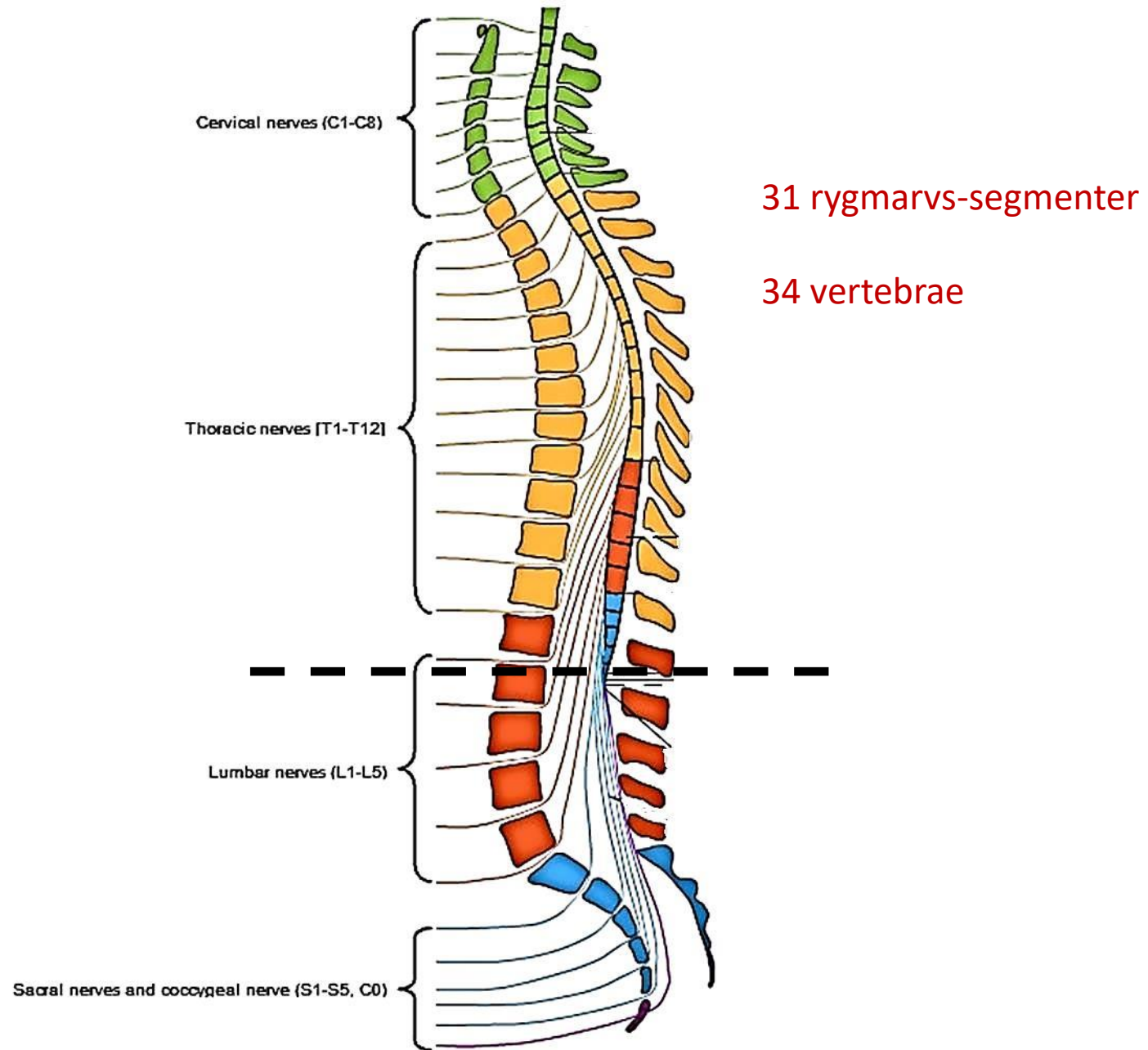
Ét medulla spinalis segment indeholder

- grå substans
- hvid substans
- radix anterior (1)
- radix posterior(2) – med spinalgangle

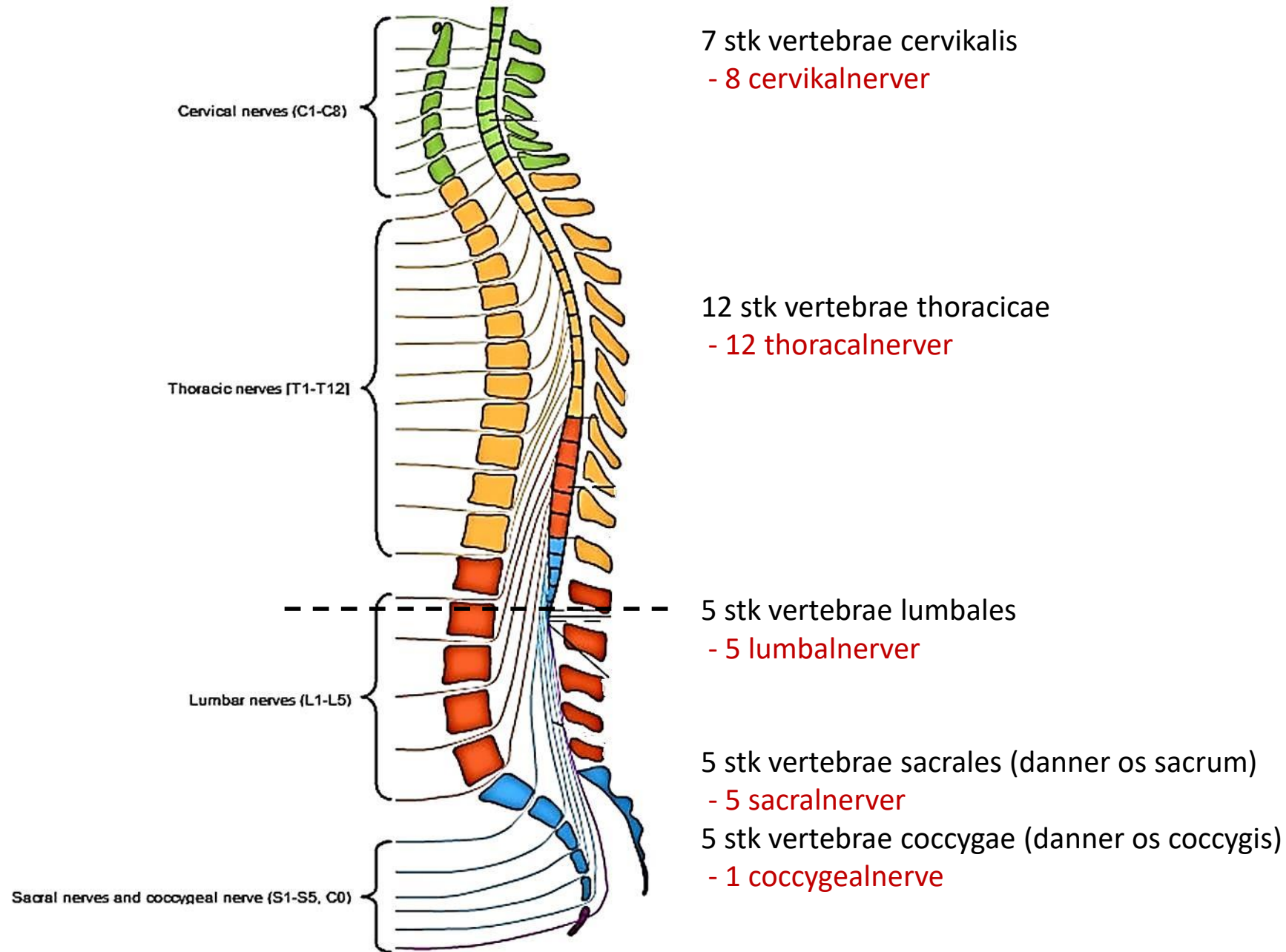
Når trådene fra radix ant. + post. samles bliver de til en spinalnerve (5)

Når spinalnerven forlader columna vertebralis - gennem foramen intervertebrale (6) - befinder den sig i det perifere nervesystem

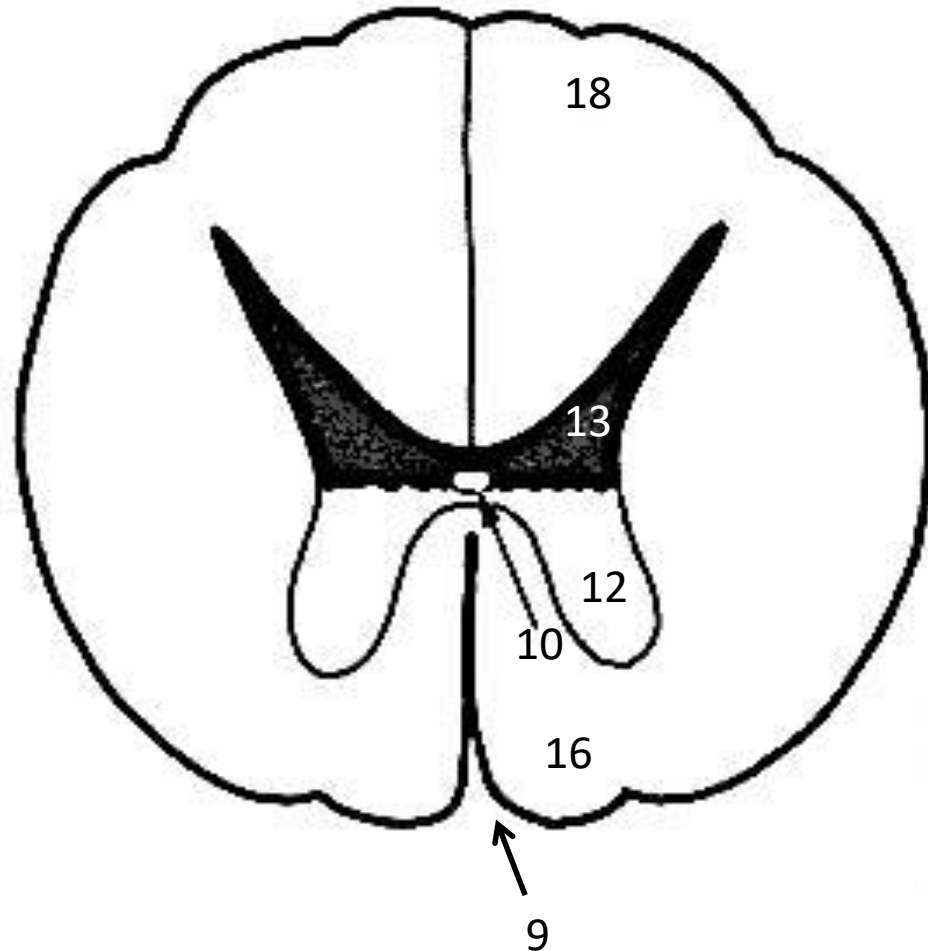
medulla spinalis



medulla spinalis



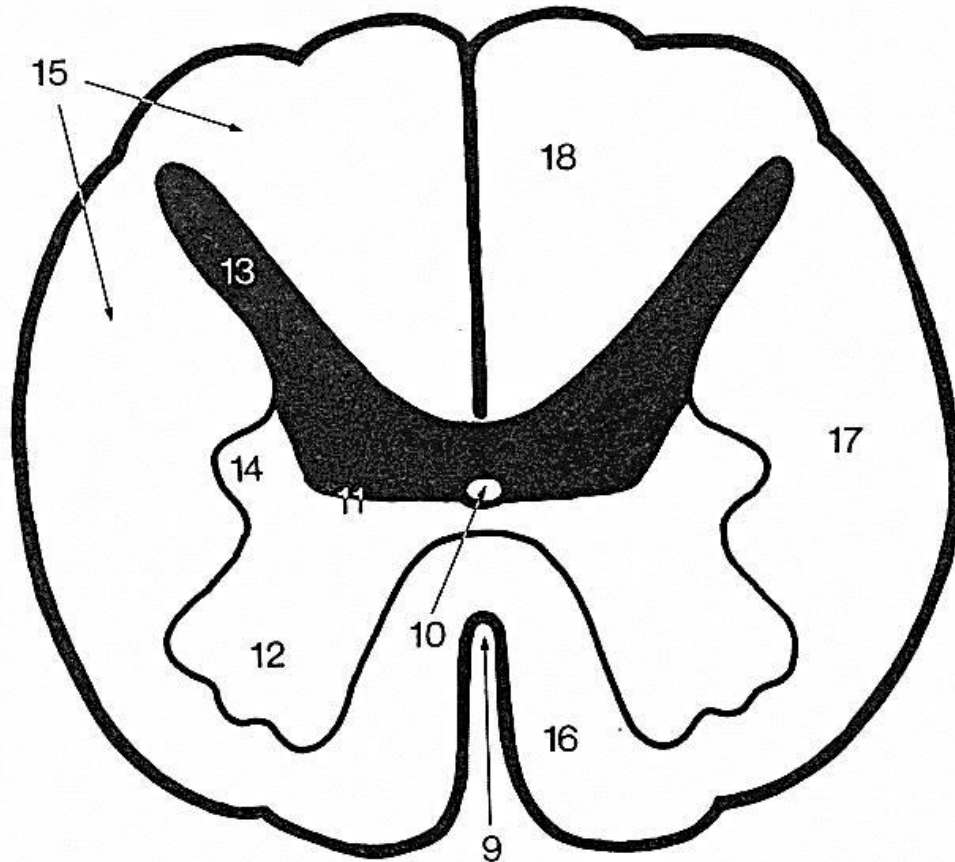
medulla spinalis



SNIT OVER BRYSTHØJDE

- 9 : fissura mediana anterior
- 10: canalis centralis
- 13: baghorn (grå substans)
- 12: forhorn (grå substans)
- 16: forstreng (hvid substans)
- 18: bagstreng (hvid substans)

medulla spinalis



SNIT I BRYSTHØJDE

9 : fissura mediana anterior

10: canalis centralis

13: baghorn

14: sidehorn

12: forhorn

16: forstreng

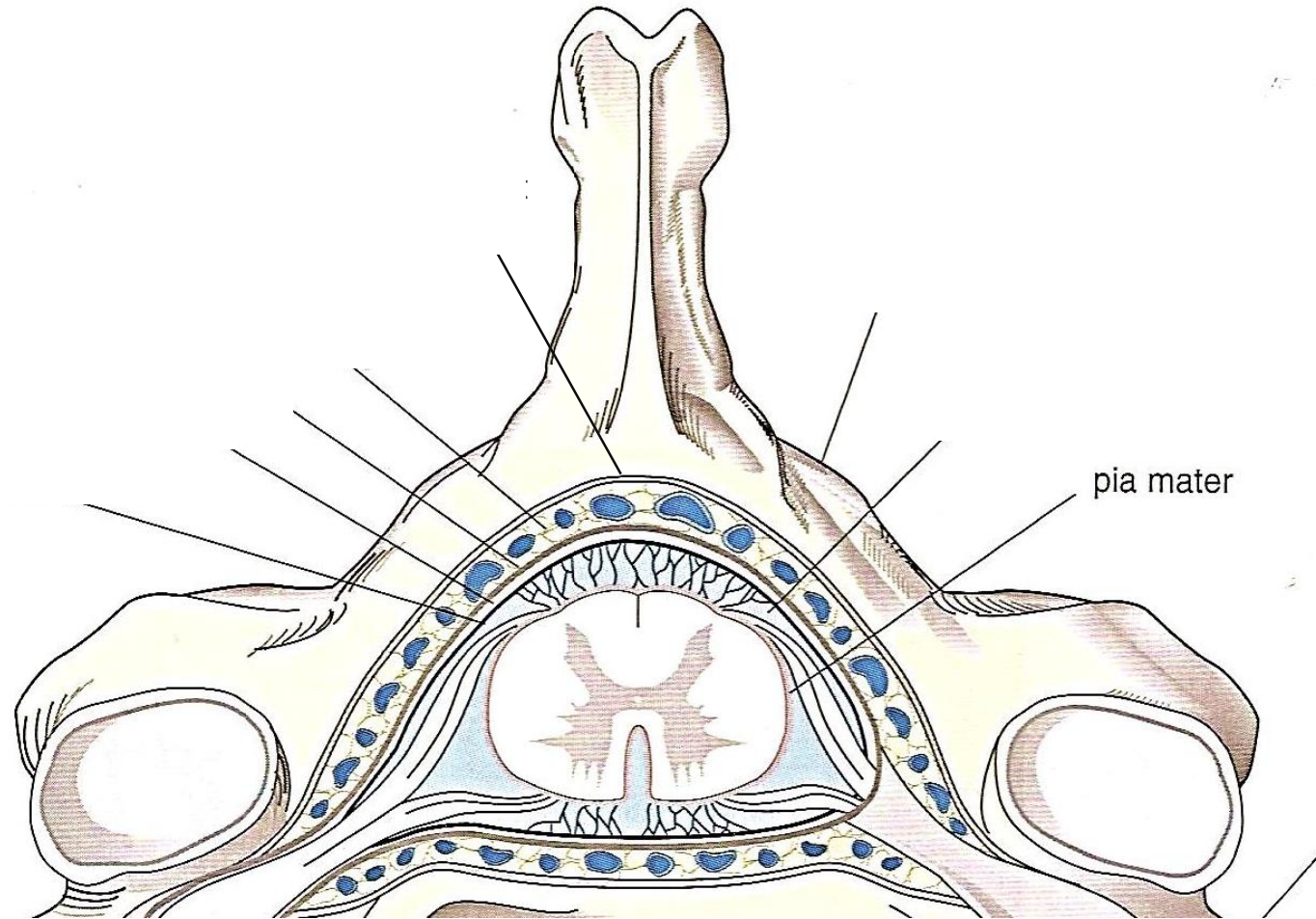
17: sidestreng

18: bagstreng

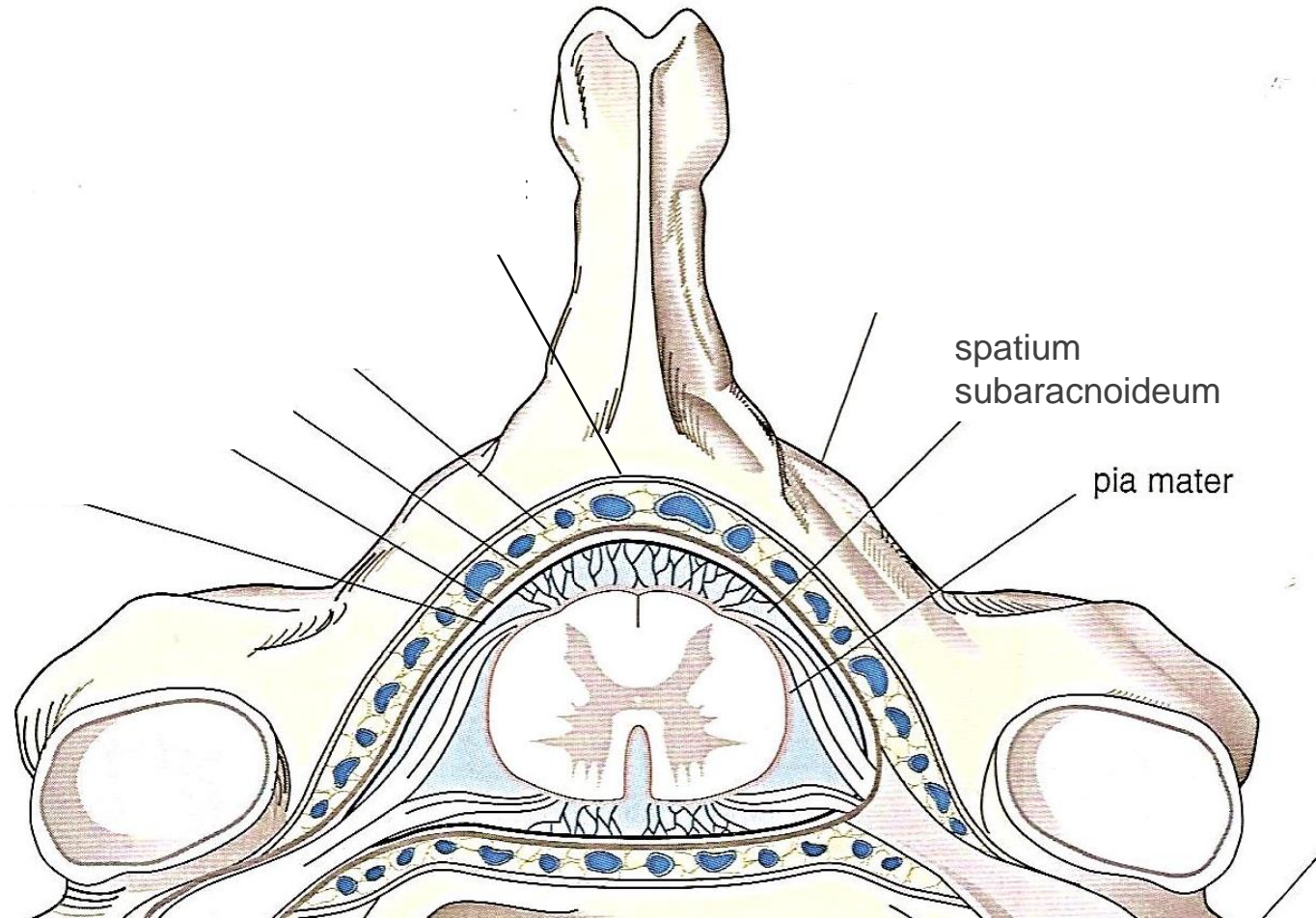
(grå substans)

(hvid substans)

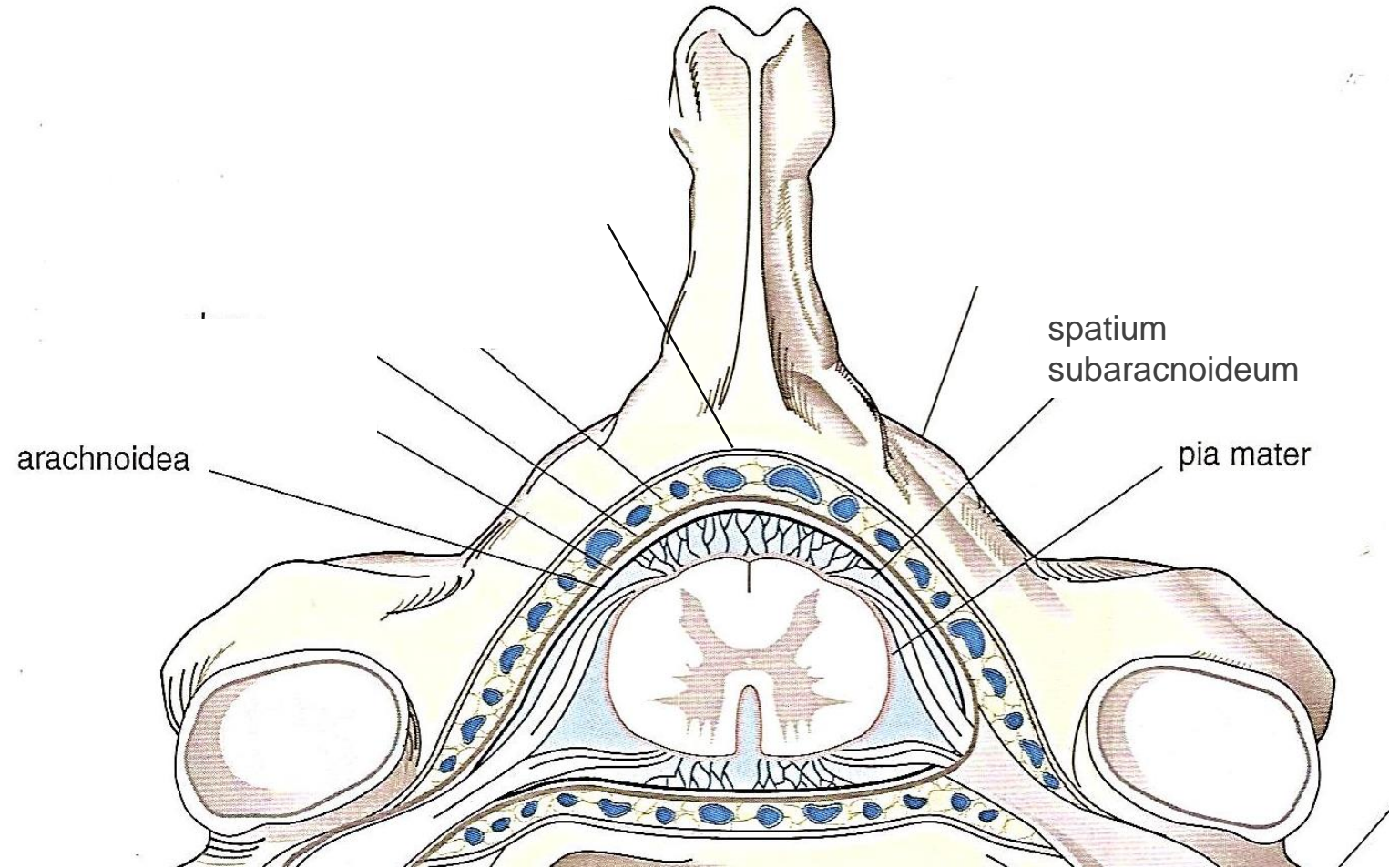
rygmarvens hinder



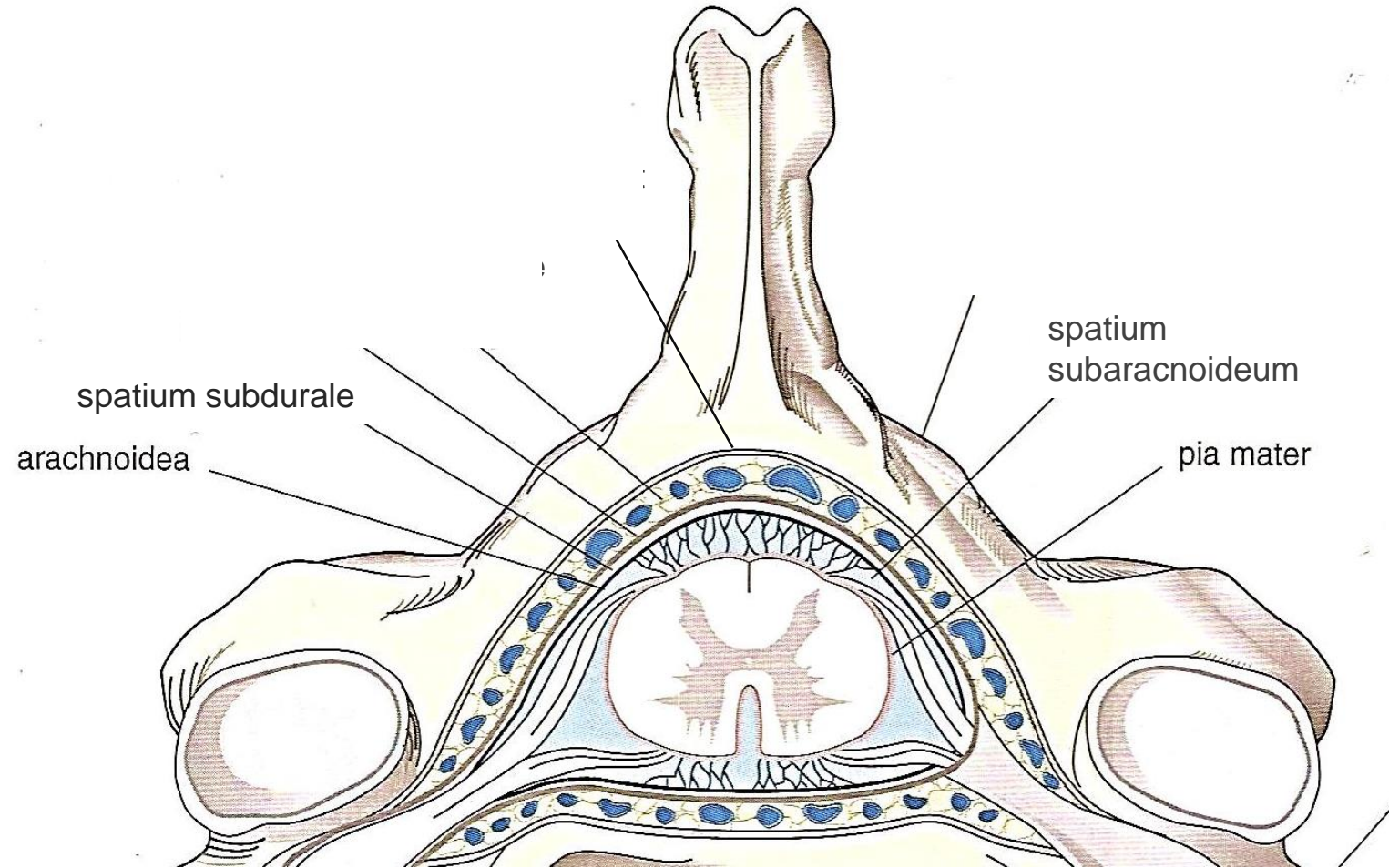
rygmarvens hinder



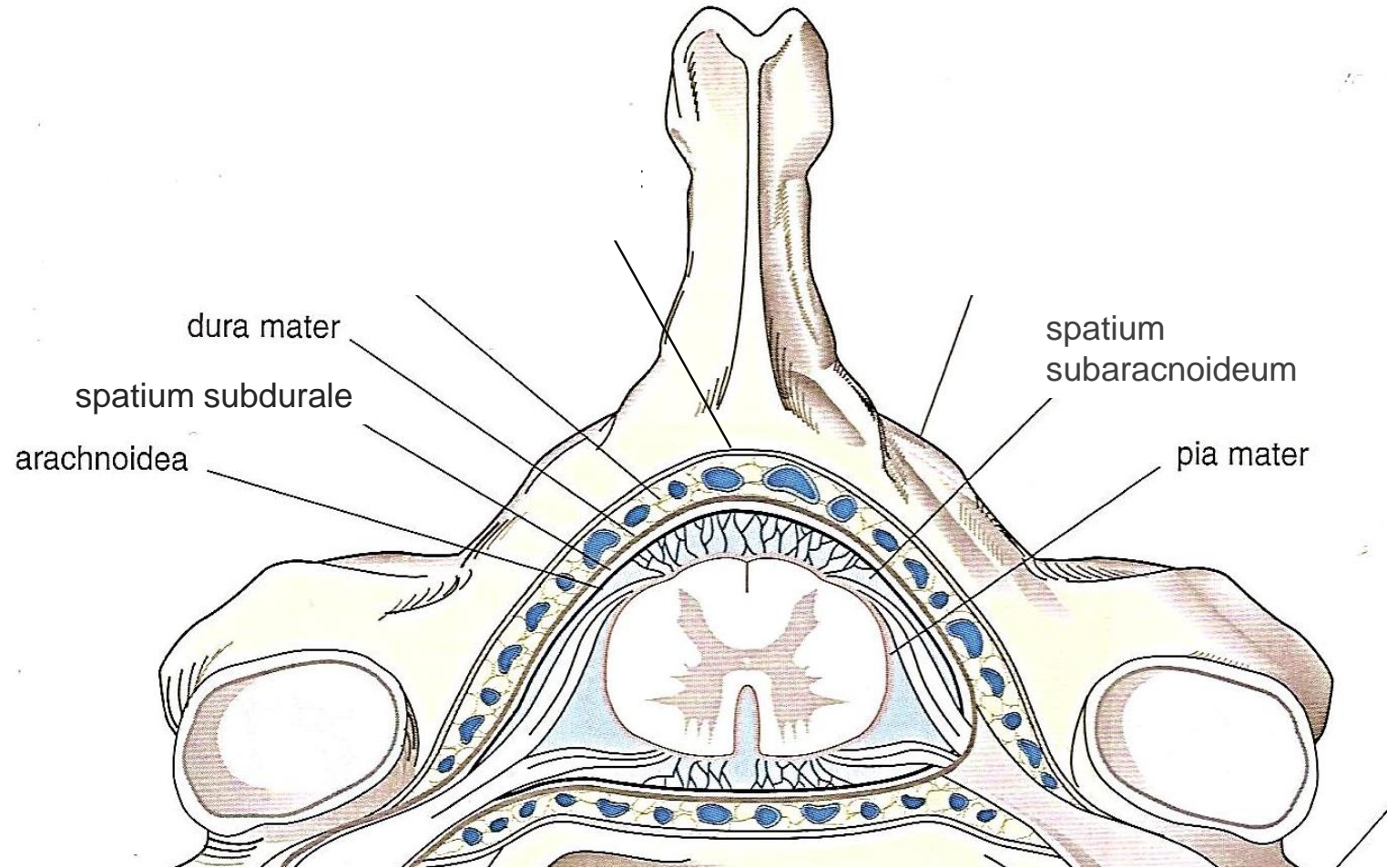
rygmarvens hinder



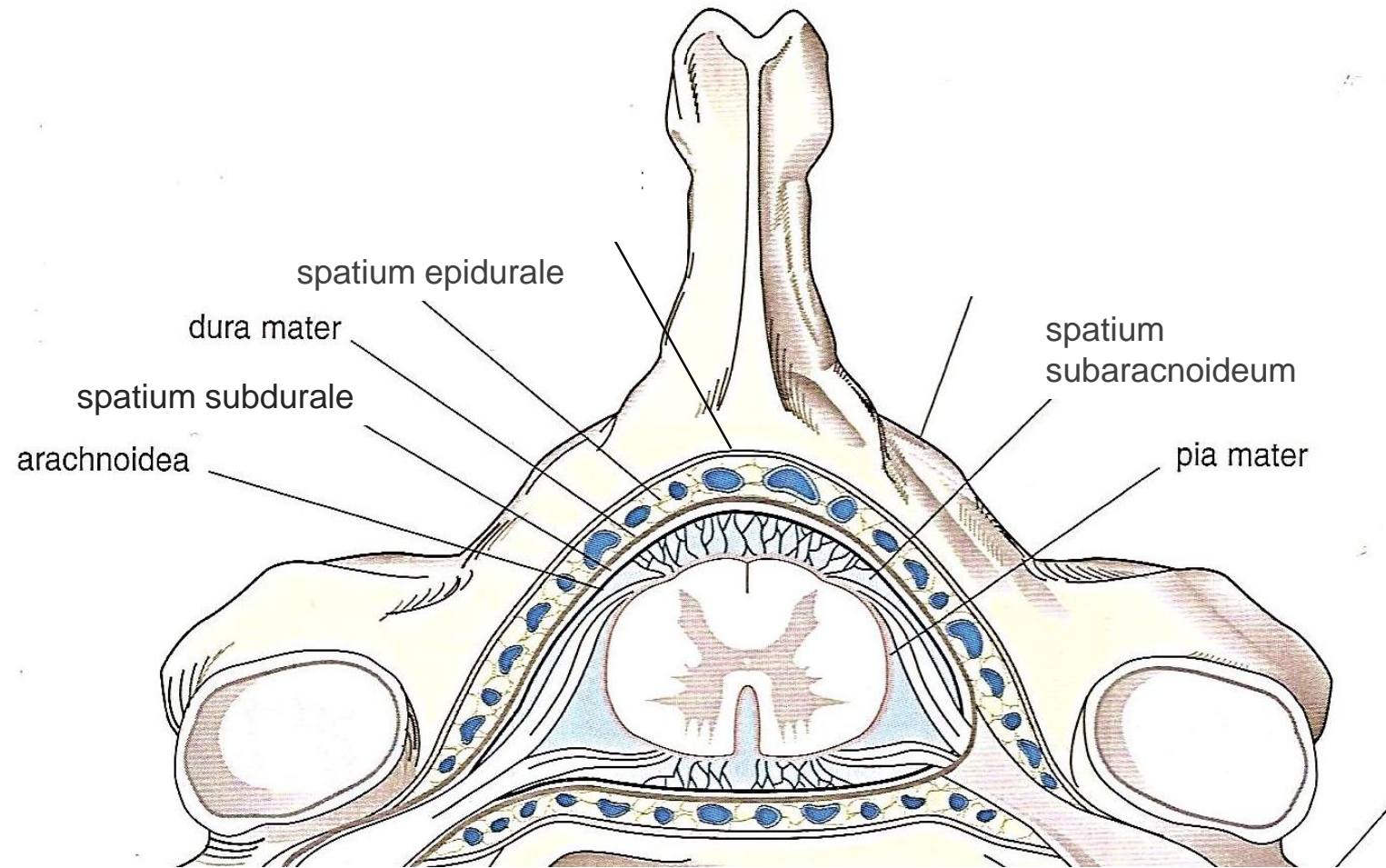
rygmarvens hinder



rygmarvens hinder



rygmarvens hinder



rygmarvens hinder

