

introduktion

NERVESYSTEMET

CENTRALNERVESYSTEM
og
PERIFERE NERVESYSTEM

Nervesystem

Front



- Centrale

- Perifere

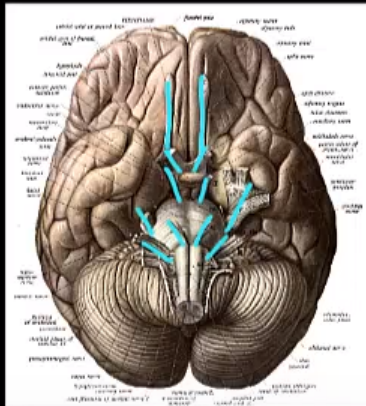
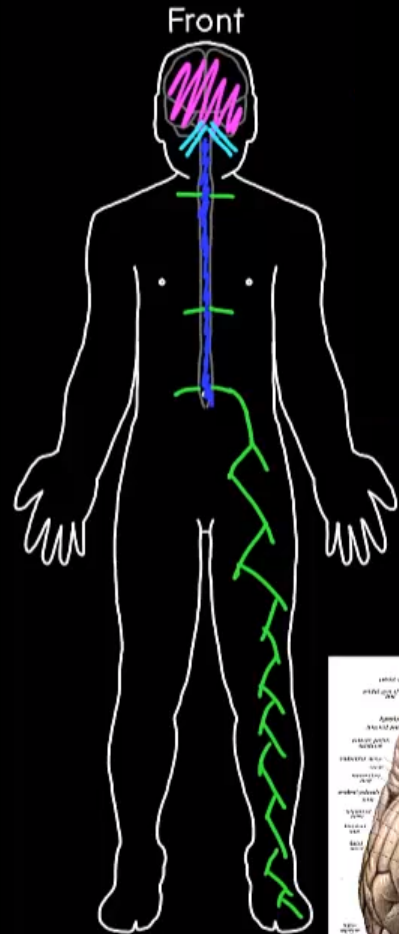
Nervesystem

- Centrale

- Hjerne
- Rygmarv

- Perifere

- Hjernenerver
- Spinalnerver



Nervesystem

- **Centrale**

- Hjerne
- Rygmarv

- **Perifere**

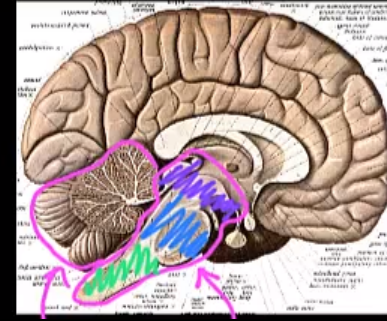
- Hjernenerver
- Spinalnerver



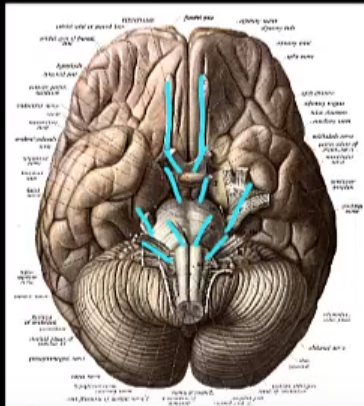
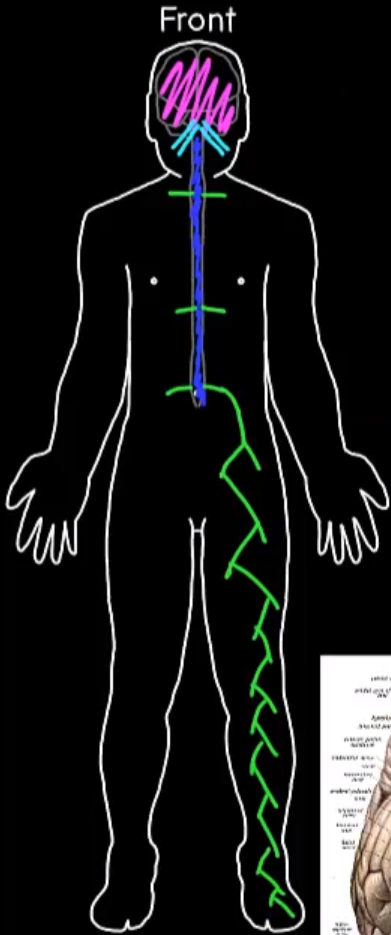
Encephalon



Hemisfærer



Cerebellum+Hjernestamme



Nervesystem

- **Centrale**
 - Hjerne
 - Rygmarv

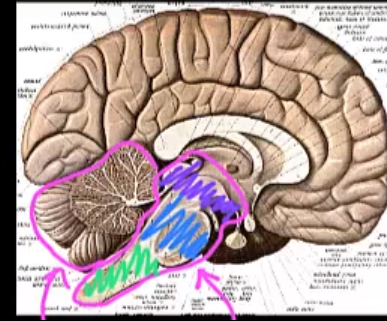
- **Perifere**
 - Hjernenerver
 - Spinalnerver



Encephalon



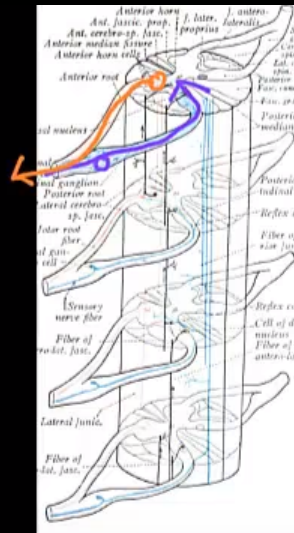
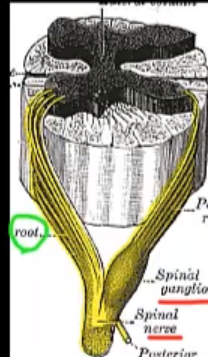
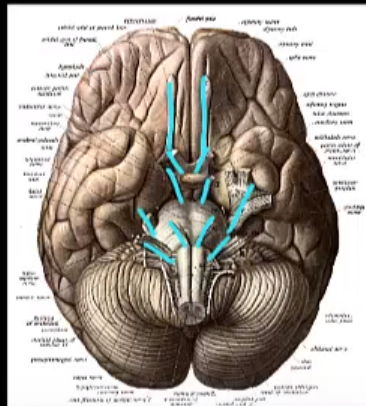
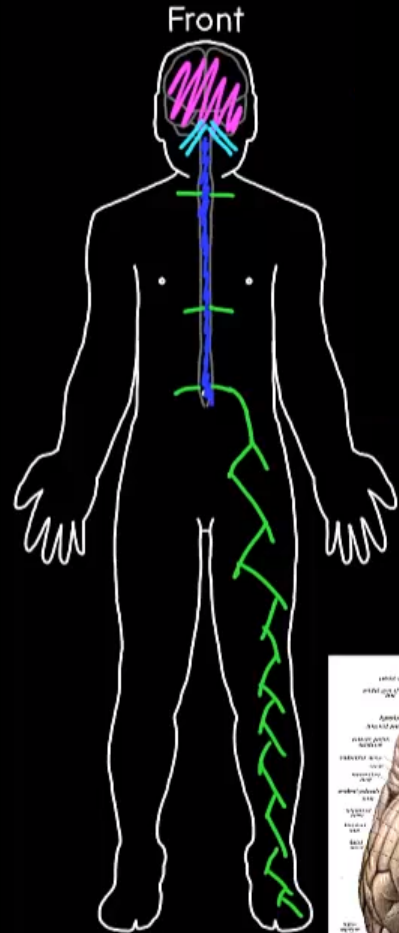
Hemisfærer



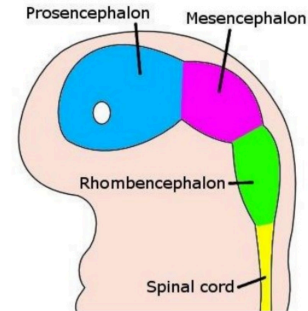
Cerebellum+Hjernestamme

Afferente neuroner

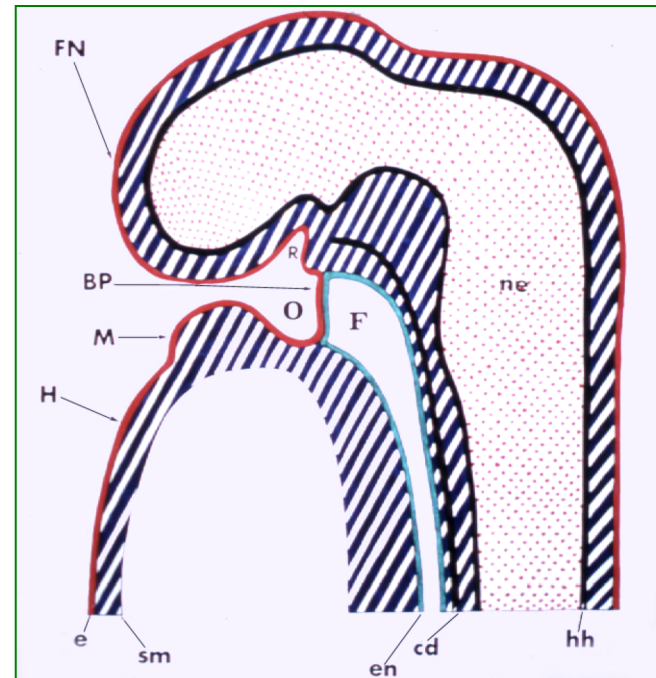
Efferente neuroner



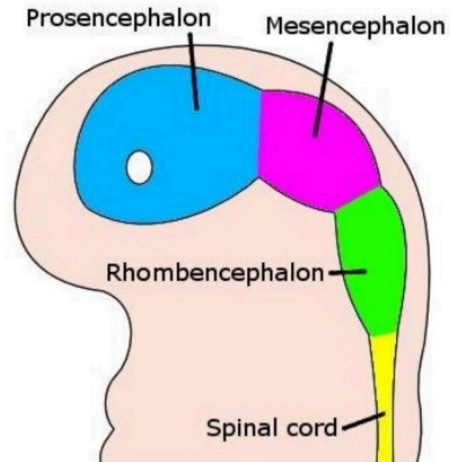
- Neuralrøret
- Hjernens ventrikler
- Hjernestammen
- Rygmarv
- Hjernens hinder
- Limbiske system
- Basale hjerneganglier
- Ledningsbaner
- Autonome nervesystem

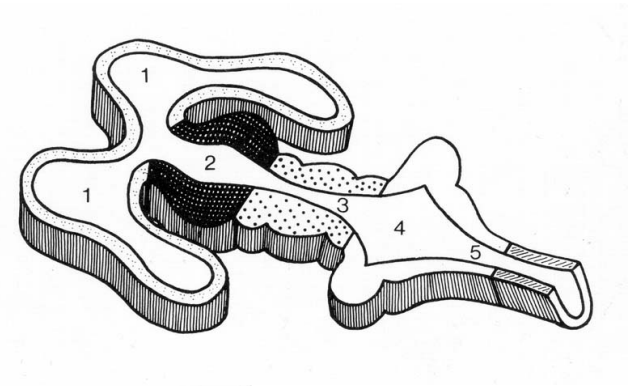
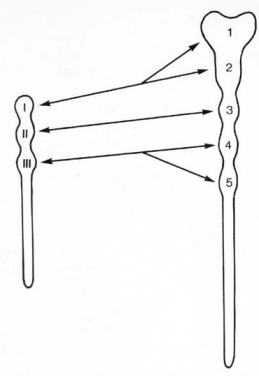
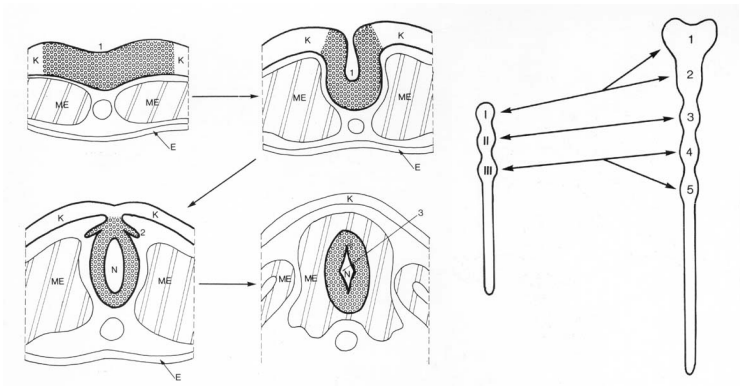


Mediansnit gennem hovedenden af et foster

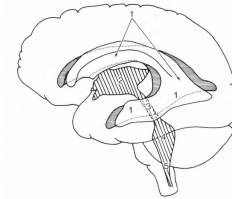
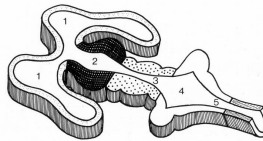
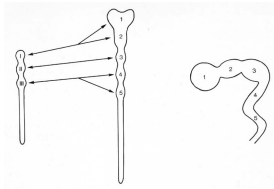


NEURALRØRETS UDVIKLING





Hjerneblærens udvikling



PRIMÆRE HJERNEBLÆRER	SEKUNDÆRE HJERNEBLÆRER	BLIVER TIL HJERNEDEL	INDEHOLDER VENTRIKEL
prosencephalon	telencephalon	telencephalon	1. og 2. lateral
	diencephalon	diencephalon	3.
mesencephalon	mesencephalon	mesencephalon	aqueductus mesencephali
rhombencephalon	metencephalon	pons	4.
		cerebellum	
	myelencephalon	medulla oblongata	4./canalis centralis

Den officielle indvielse af Aarhus Tandlægeskole 1961

