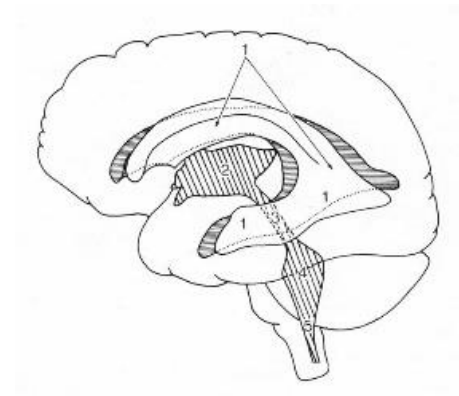
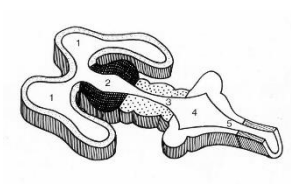
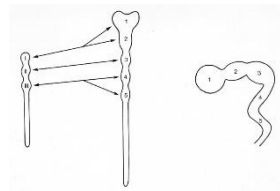


# Myelencephalon



**TELENCEPHALON:**

- er omkring lateralventriklene. (1)

**DIENCEPHALON:**

- er omkring tredje ventrikel (2)

**MESENCEPHALON:**

- er omkring aqueductus mesencephali (3)

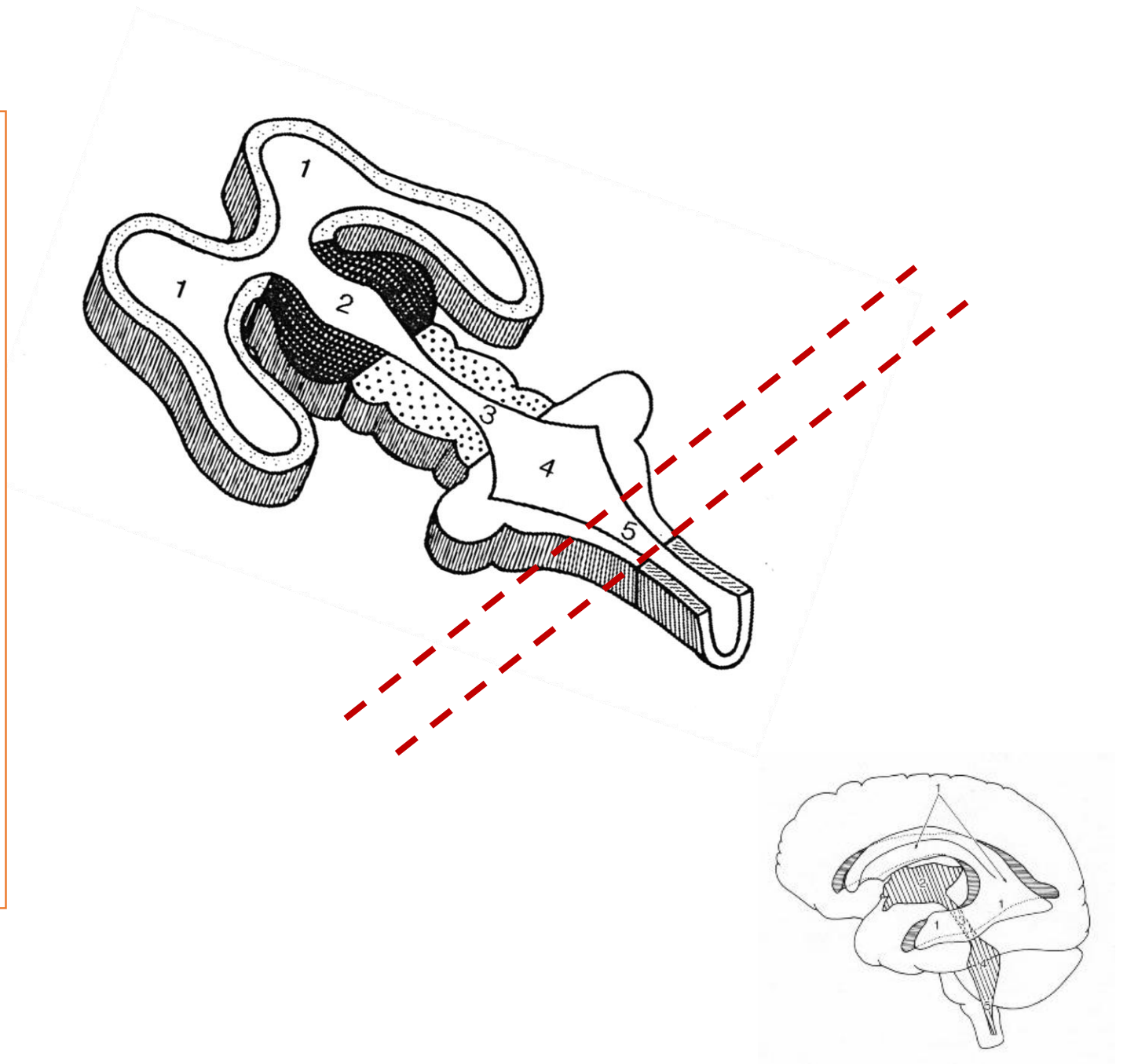
**METENCEPHALON :**

- er omkring fjerde ventrikel (4)



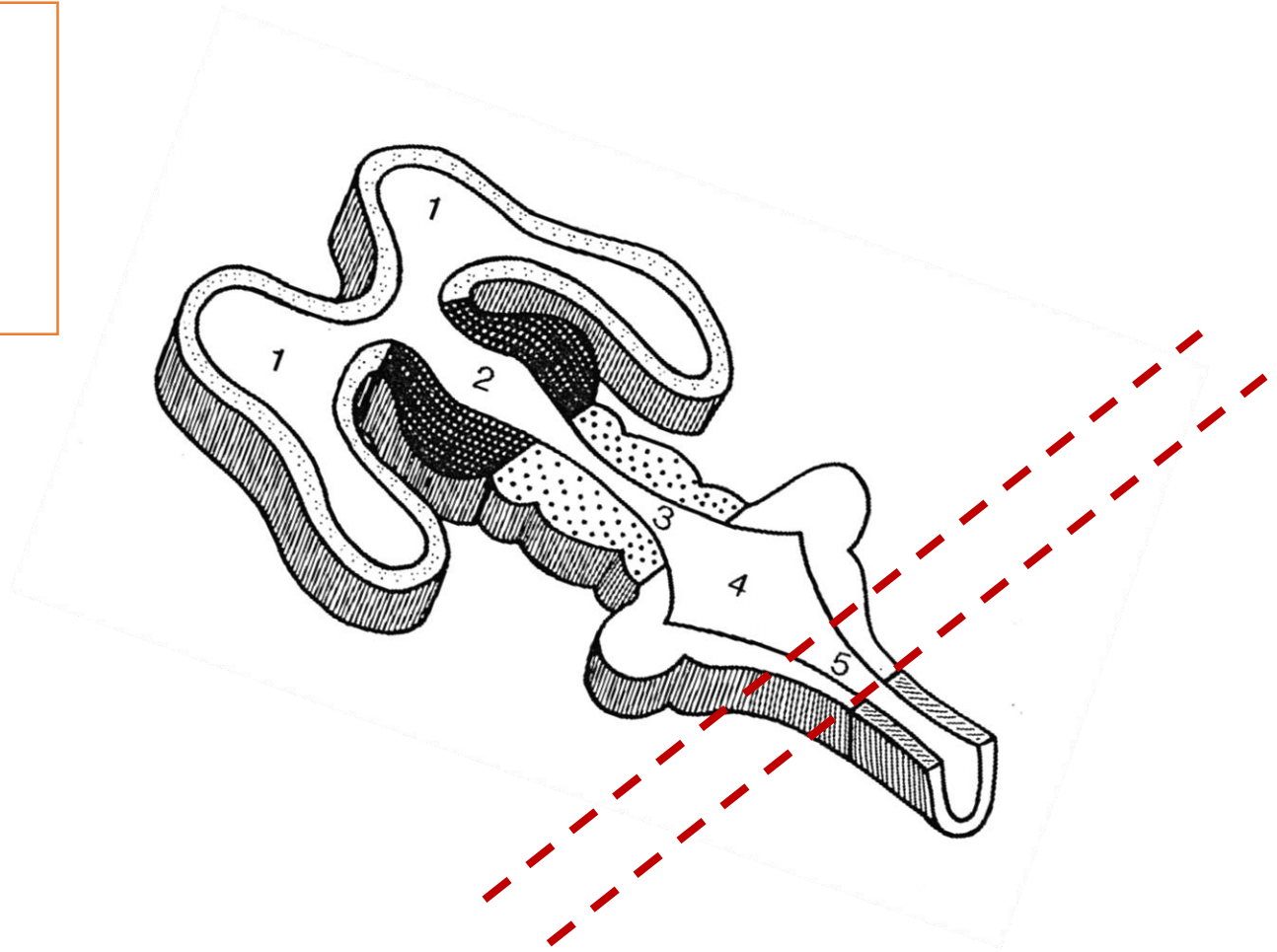
**MYELENCEPHALON:**

- er omkring canalis centralis (5)

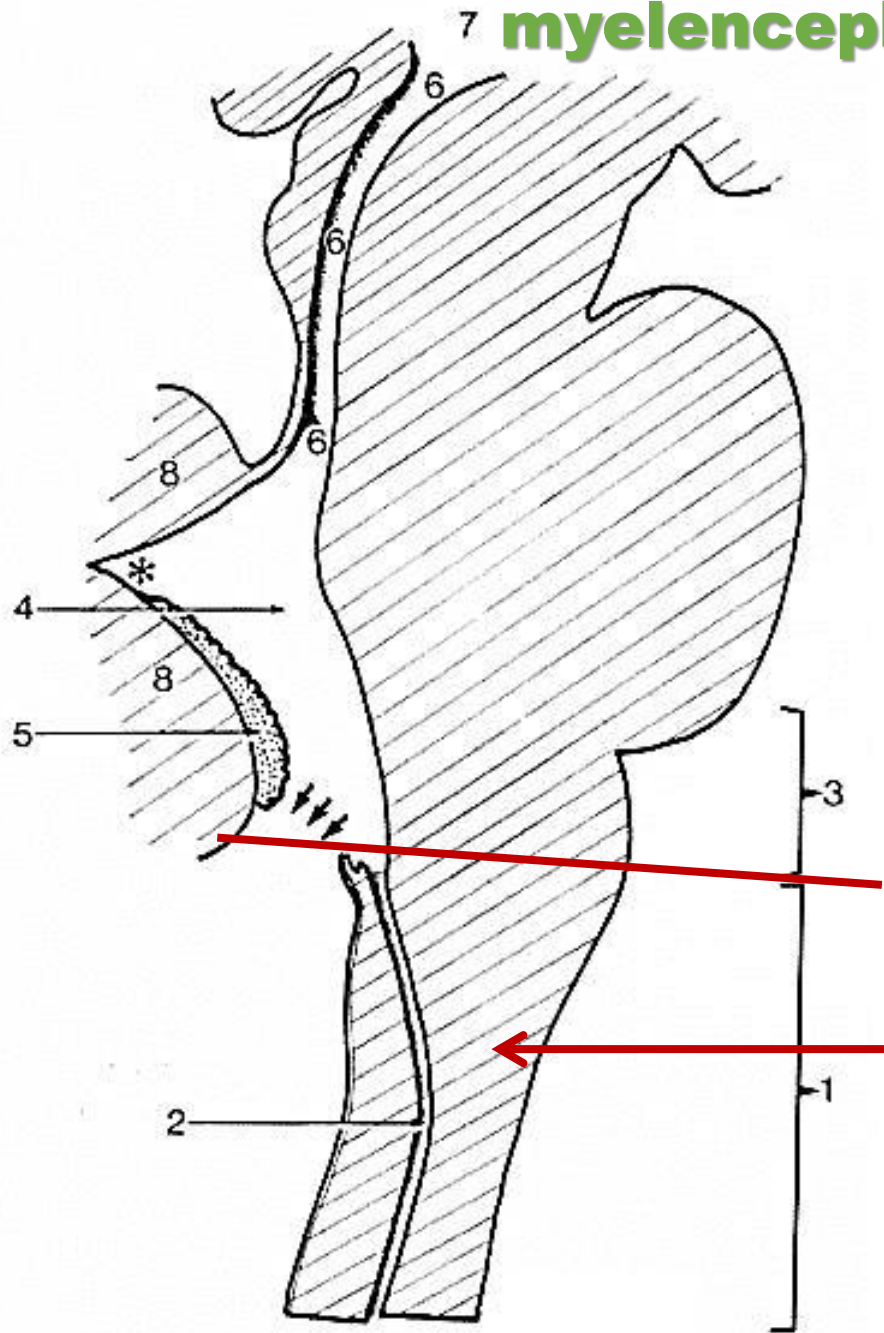


### MYELENCEPHALON:

- er omkring canalis centralis (4)
- den lukkede del af MEDULLA OBLONGATA



# 7 myelencephalon



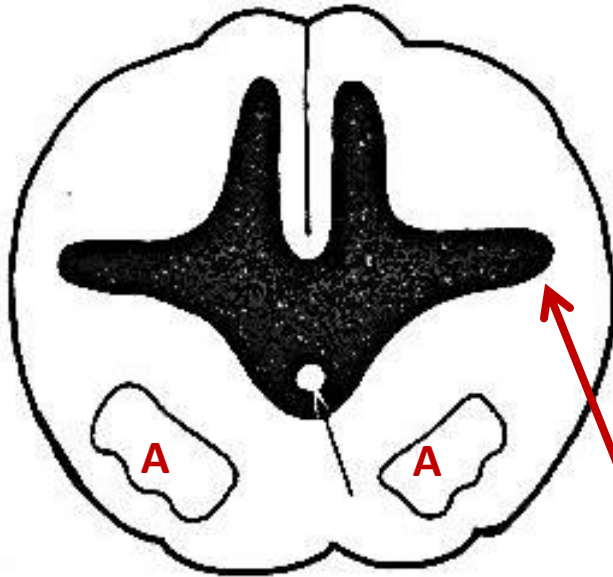
medulla oblongata med  
canalis centralis (2)

anterior



## MYELENCEPHALON:

- er omkring canalis centralis (4)
- den lukkede del af MEDULLA OBLONGATA



Snit gennem nederste del af  
MEDULLA OBLONGATA

- ligner til dels opbygningen af øverste del af  
medulla spinalis:

Hvid substans med blandt andet

- PYRAMIS (A) (motoriske pyramidebaner)

Grå substans med

- canalis centralis (pil)

