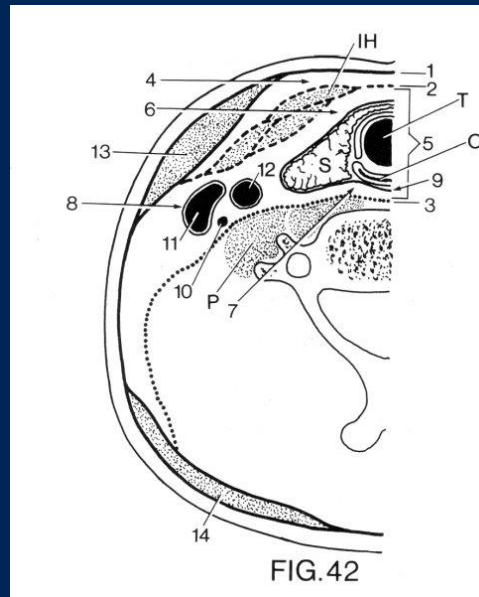


# Halsmuskler og lag



# Muskelgrupper

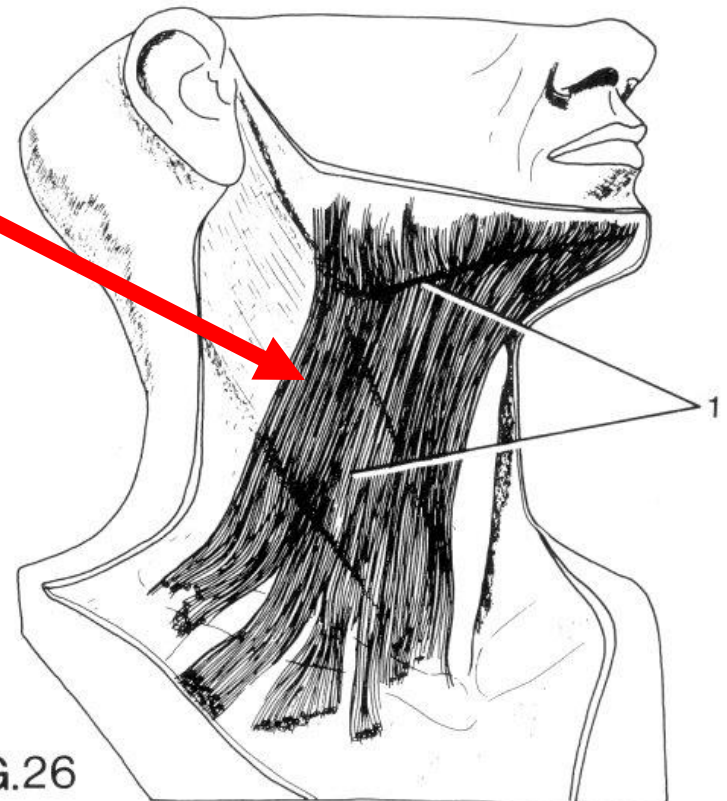
- **halsmuskler**
- rygmuskler
- bugmuskler
- brystmuskler
- ekstremitetsmuskler
- hovedets muskler

# Halsens muskler

- Én tynd hudmuskel
- Skeletmuskler i tre lag

# Halsens hudmuskel

- *platysma*
  - i underhuden
  - er bred og flad
  - bundet til brystkassen
  - bl a mandiblen
  
- innerveres af n. facialis



# Halsens skeletmuskler i 3 lag

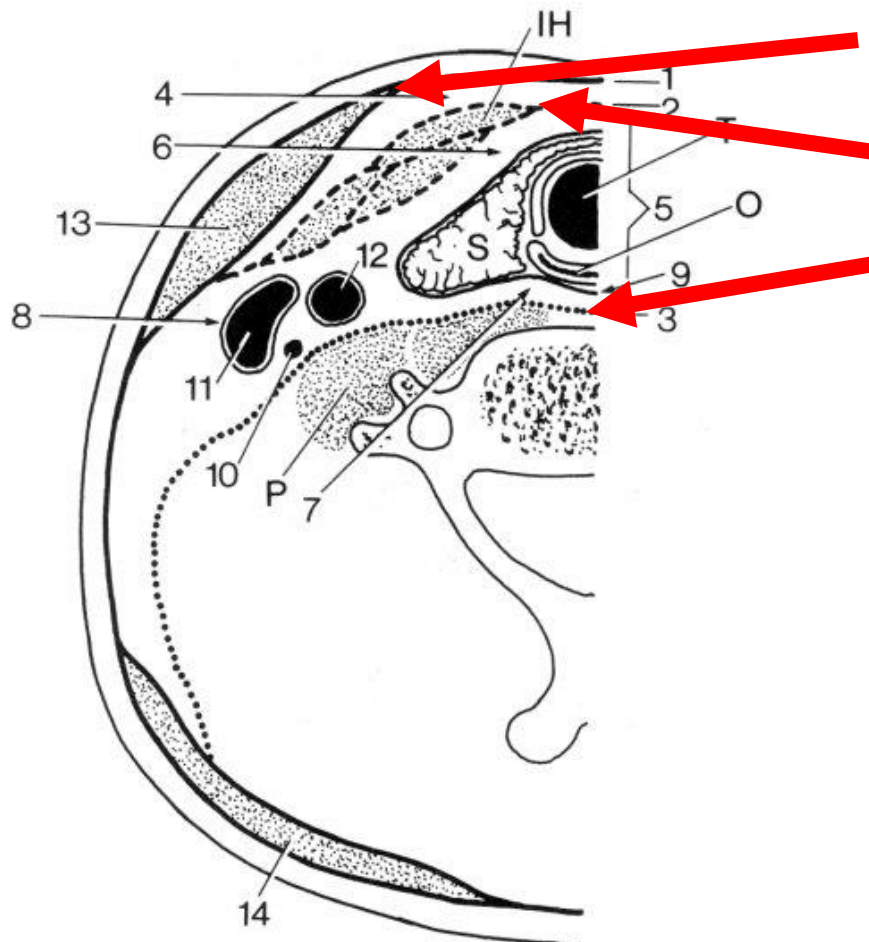


FIG.42

- de ligger i tre lag
  - m. sternocleidomastoideus
  - tungebensmuskler
  - prevertebralmuskler

# Halsens skeletmuskler

- *m. sternocleidomastoideus*
  - udspring
    - sternum og clavicula
  - tilhæftning
    - processus mastoideus
  
- innerveres af n. accessorius

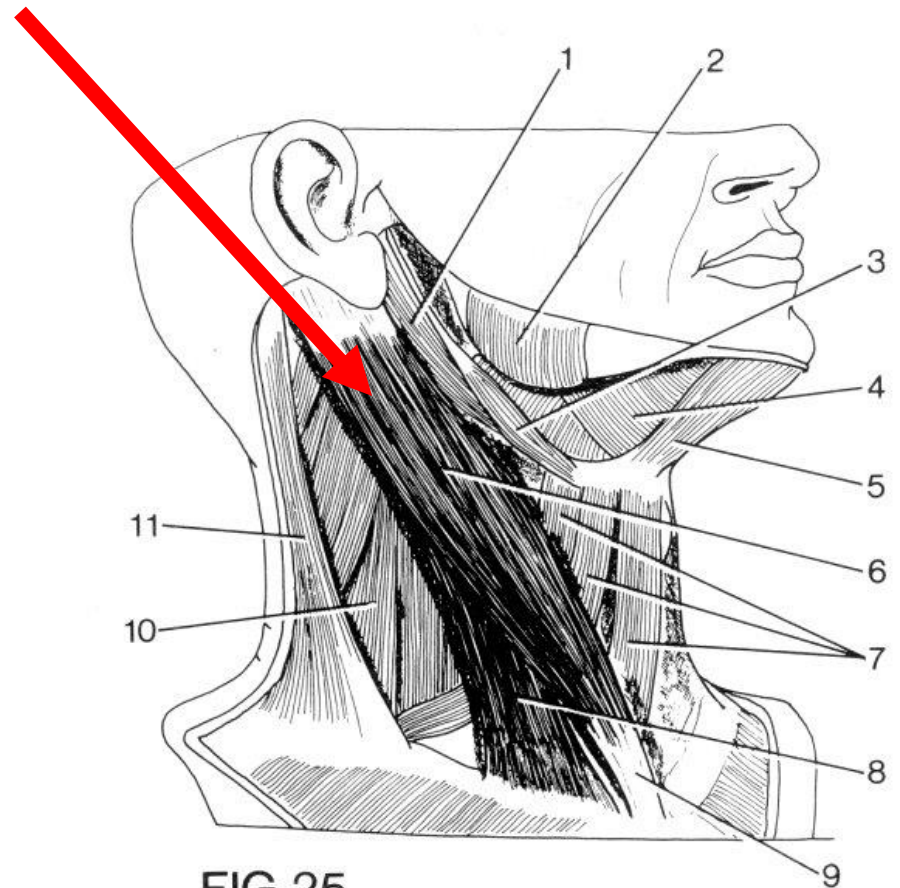
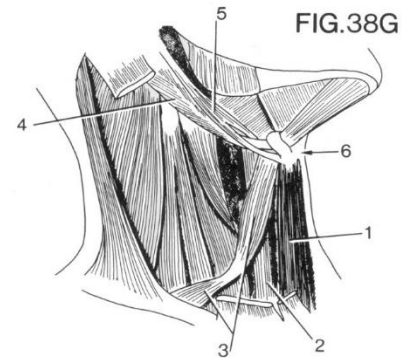


FIG. 25

# Halsens skeletmuskler

- tungebensmuskler
  - suprahyoide muskler
  - infrahyoide muskler



# Halsens skeletmuskler

- tungebensmuskler
  - suprahyoide muskler
  - infrahyoide muskler

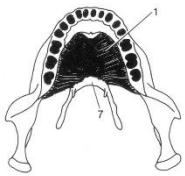


FIG. 27

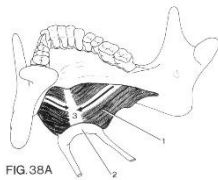


FIG. 38A



FIG. 33

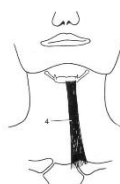


FIG. 32

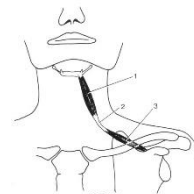


FIG. 31

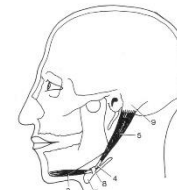


FIG. 29

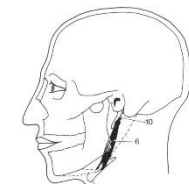


FIG. 30

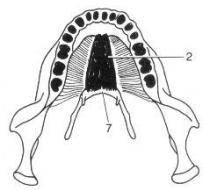


FIG. 28

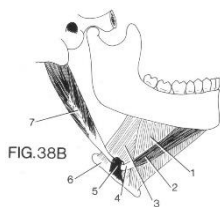


FIG. 38B



FIG. 38C

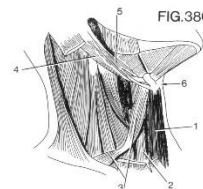


FIG. 38G

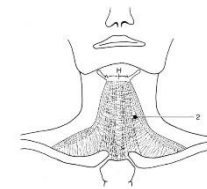
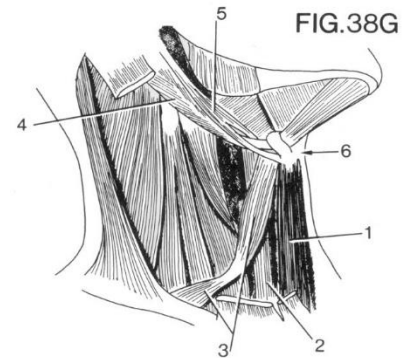


FIG. 40



# Suprahyoide muskler

- *m. mylohyoideus*
- *m. geniohyoideus*
- *venter anterior m. digastrici*
- *venter posterior m. digastrici*
- *m. stylohyoideus*



# Suprahyoide muskler..

- *m. mylohyoideus*
  - mundbundens muskel
  - udspring:
    - corpus mandibulae
  - tilhæftning:
    - os hyoideum

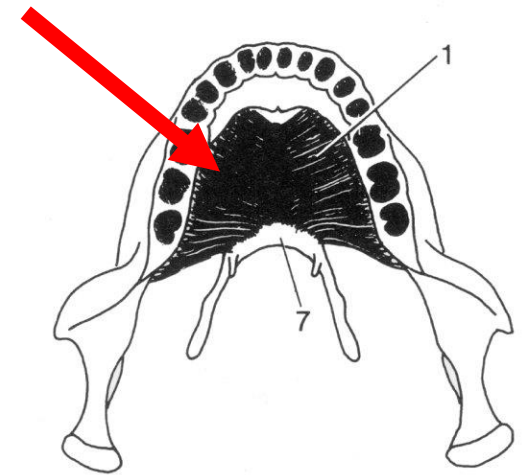
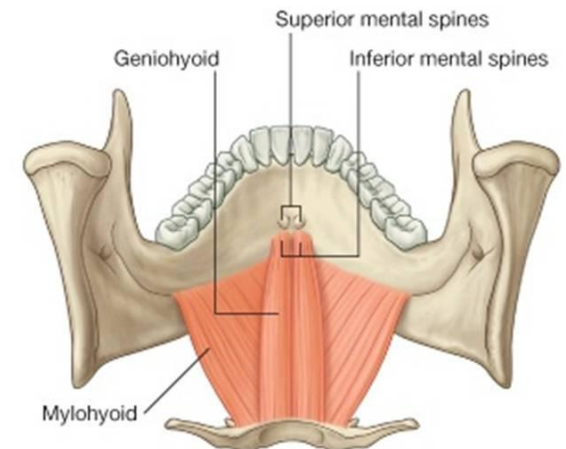
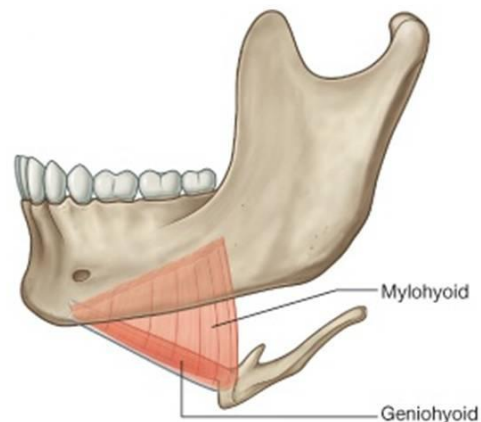


FIG. 27

- n. mandibularis



# ..Suprahyoide muskler..

- *m. geniohyoideus*
  - udspring:
    - corpus mandibulae
  - tilhæftning:
    - os hyoideum

– Innervation af plexus cervicalis

***m. geniohyoideus***

[Aa2-87](#) (16-6)

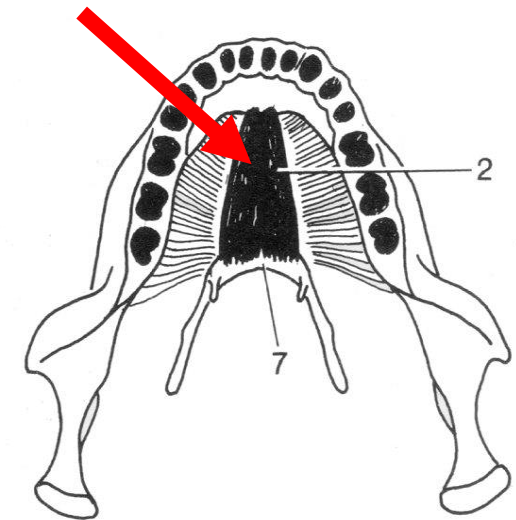
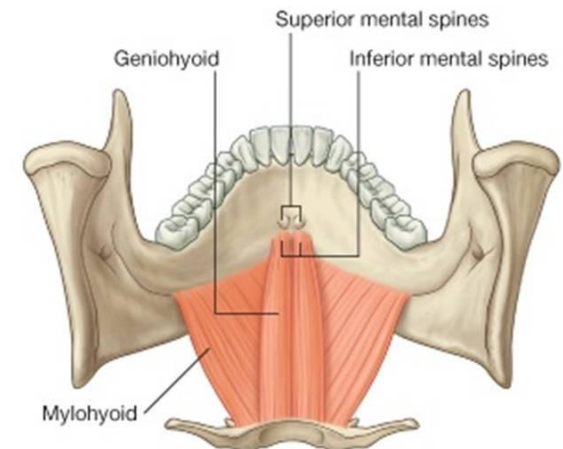
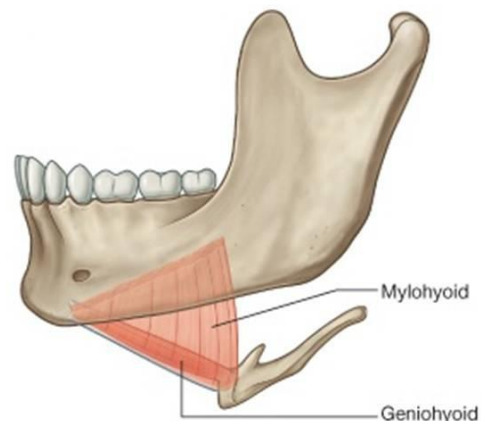


FIG. 28



# ..Suprahyoide muskler..

- *venter anterior m. digastrici*
  - udspring:
    - basis mandibula
  - tilhæftning:
    - os hyoideum
  
- n. mandibularis

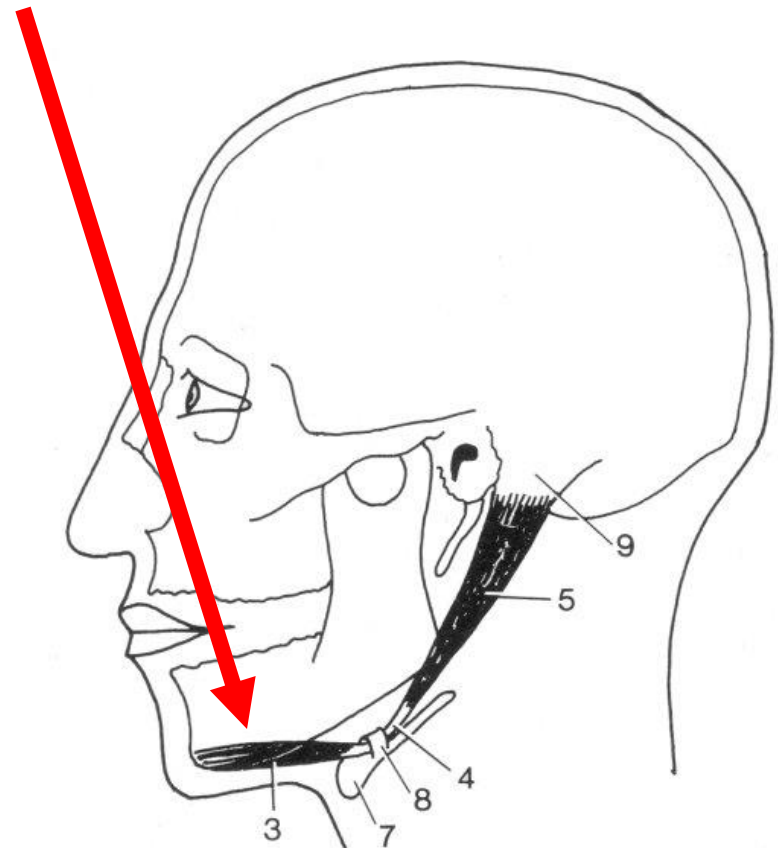


FIG. 29

# ..Suprahyoide muskler..

- venter posterior *m. digastricus*
  - udspring:
    - basis cranii
  - tilhæftning:
    - os hyoideum
  - n. facialis

De to buger mødes i en mellemsene (4).  
Ved hjælp af en bindevævsslynge (8) fra den yderste halsfascie er senen bundet fast til os hyoideum (7) og den kan ikke forskydes i slyngen..

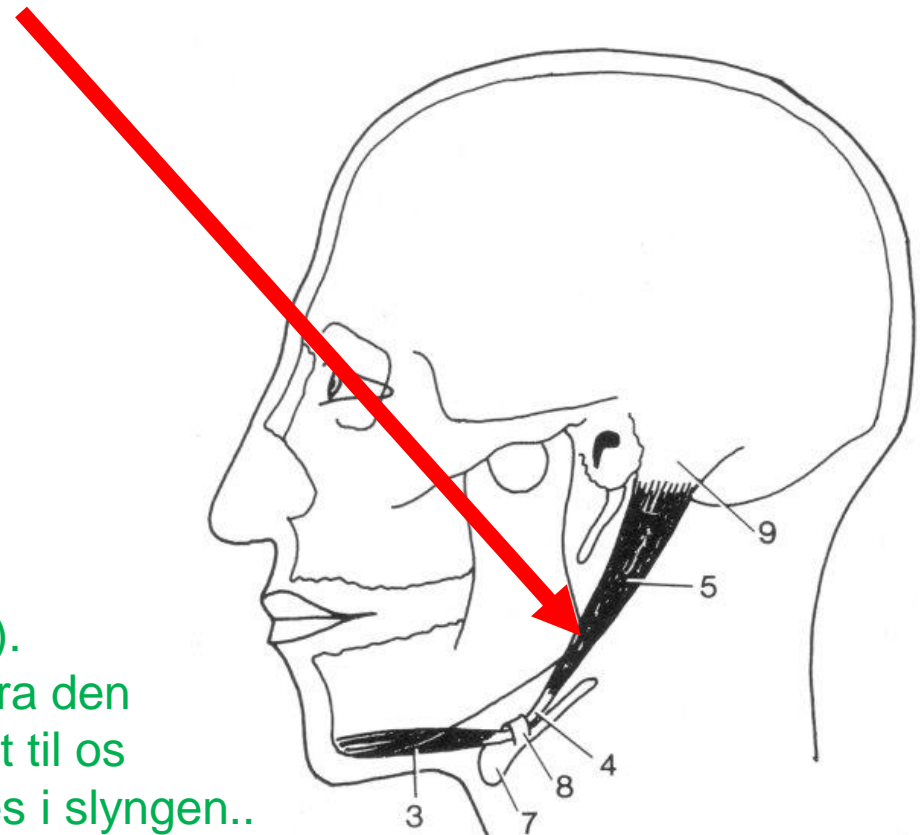


FIG. 29

# ..Suprahyoide muskler

- *m. stylohyoideus*
  - udspring
    - processus stylohyoideus
  - tilhæftning
    - os hyoideum
  - n. facialis

Den løber sammen med venter posterior *m. digastrici* til os hyoideum. Her hæfter den sig, idet musklen spalter sig og griber omkring mellemsenen af *m. digastricus*.

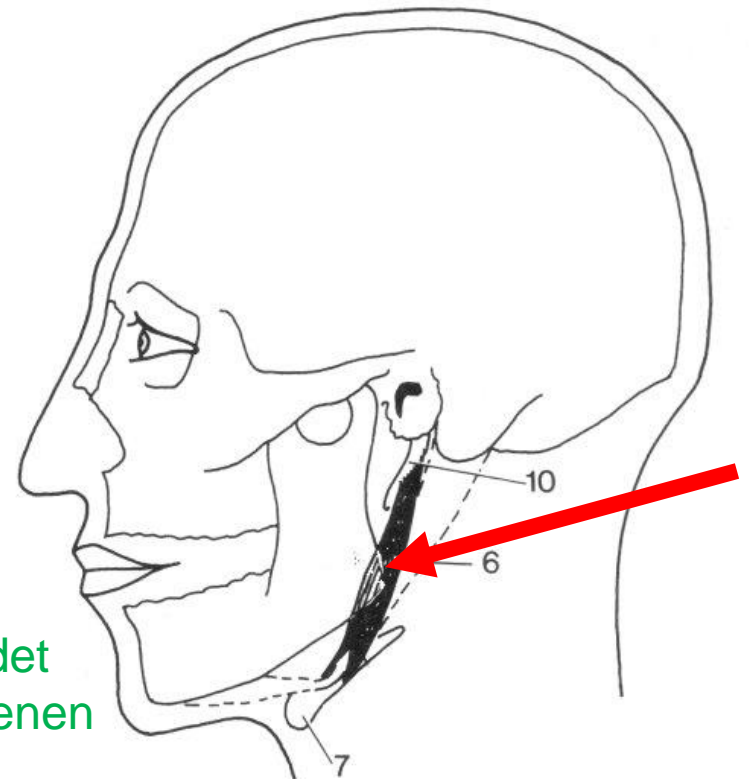


FIG. 30

# Infrahyoide muskler ..

# Infrahyoide muskler ..

- *m. omohyoideus venter superior*
- *m. omohyoideus venter inferior*
- *m. sternohyoideus*
- *m. sternothyreoideus*
- *m. thyreohyoideus*



# Infracryoide muskler ..

- *m. omohyoideus venter superior*
  - udspring:
    - os hyoideum
  - tilhæftning:
    - mellemsene

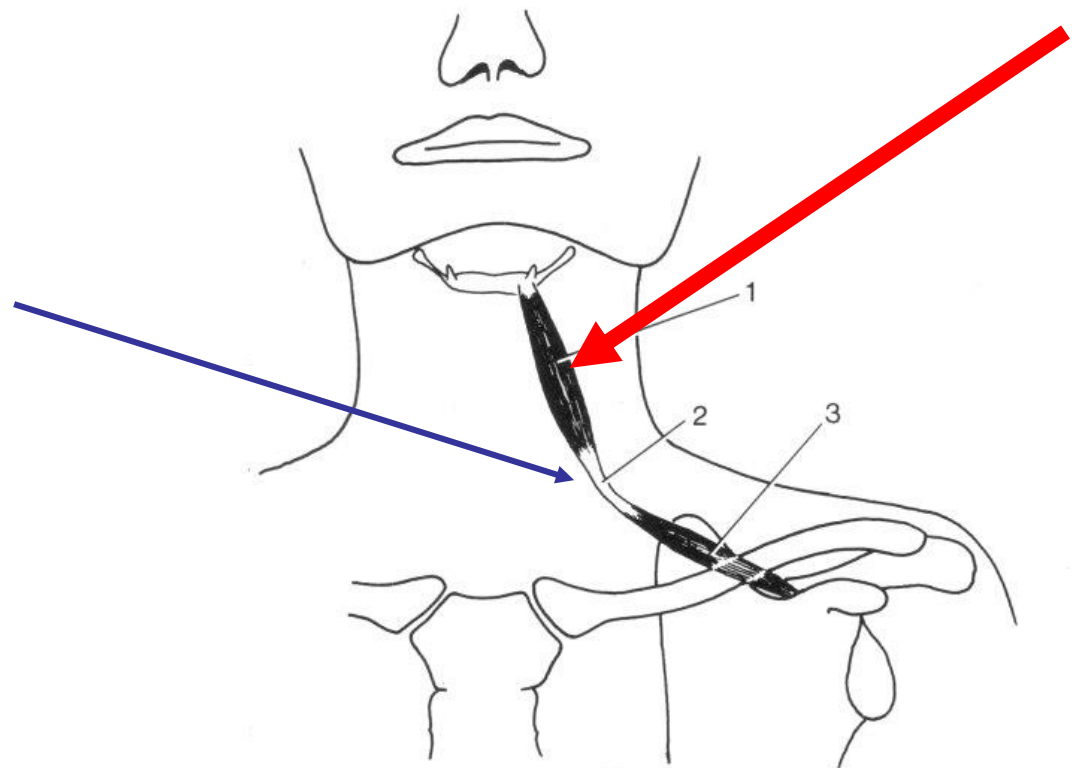


FIG. 31

# Infrahyoide muskler ..

- *m. omohyoideus venter inferior*
  - udspring:
    - scapula
  - tilhæftning:
    - mellemsene

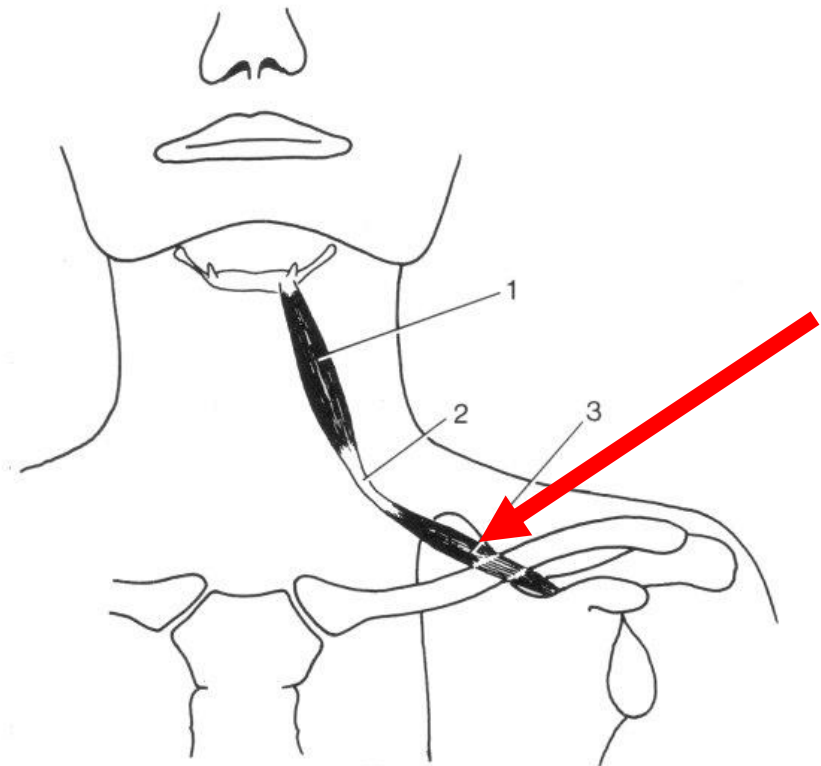
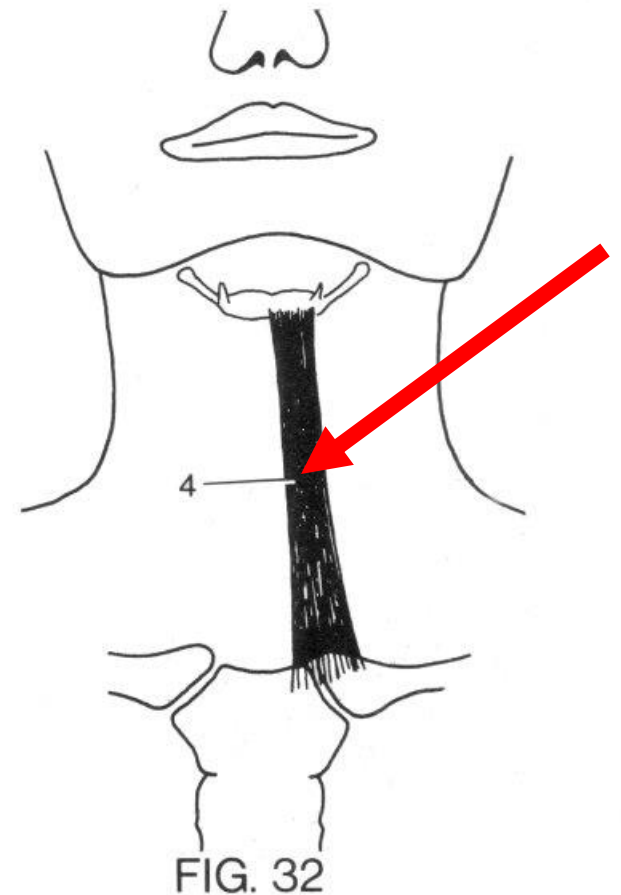


FIG. 31

De to buger mødes i en mellemsene (2) midt på halsen.

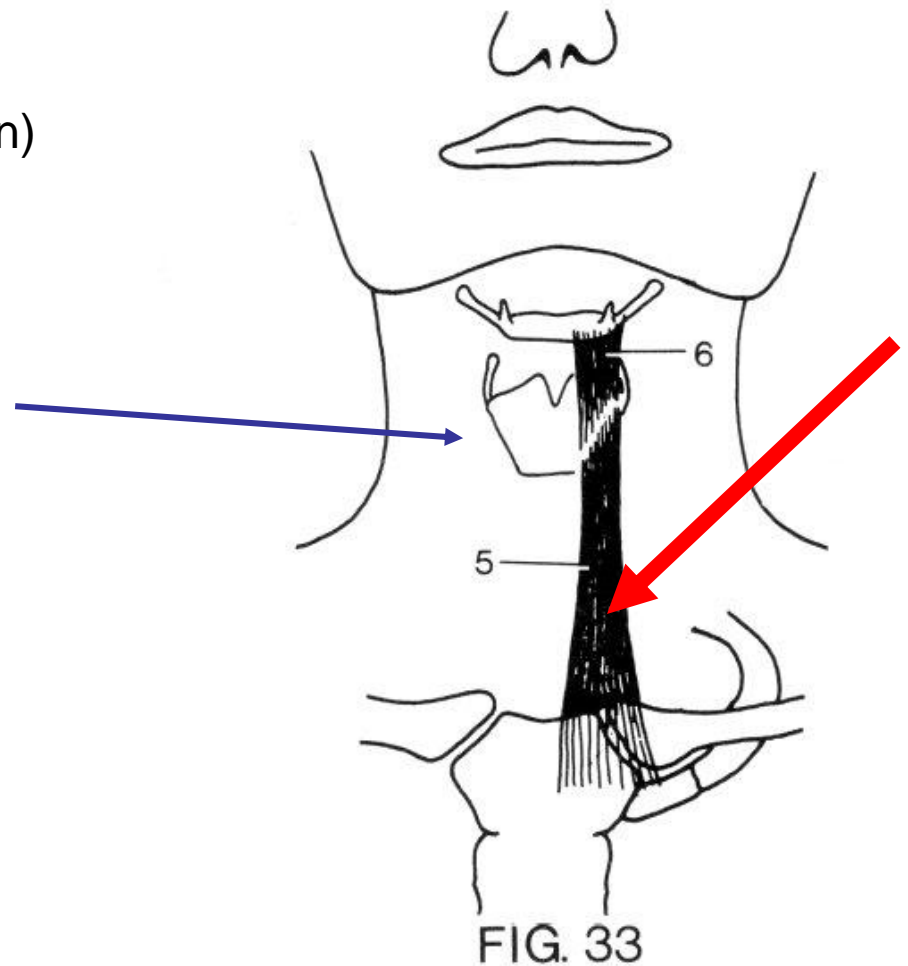
# Infrahyoide muskler ..

- *m. sternohyoideus*
  - udspring:
    - manubrium sterni (bagsiden)
  - tilhæftning:
    - os hyoideum



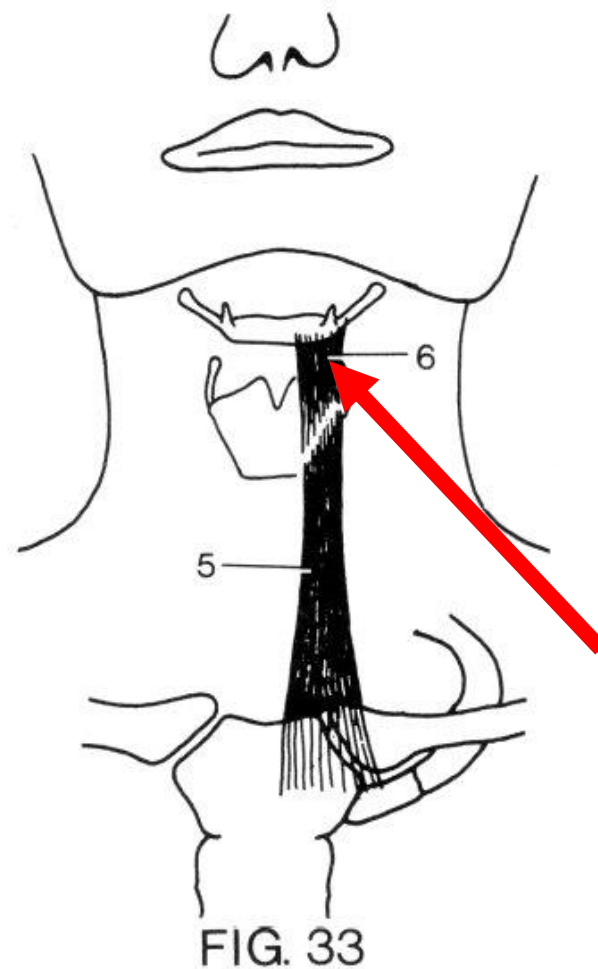
# Infrahyoide muskler

- *m. sternothyreoideus*
  - udspring:
    - manubrium sterni (bagsiden)
  - tilhæftning:
    - cartilago thyreoidea



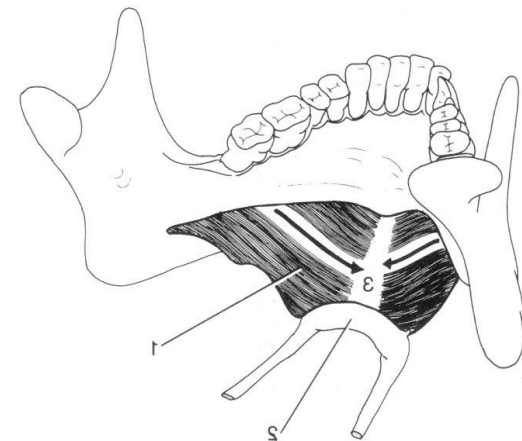
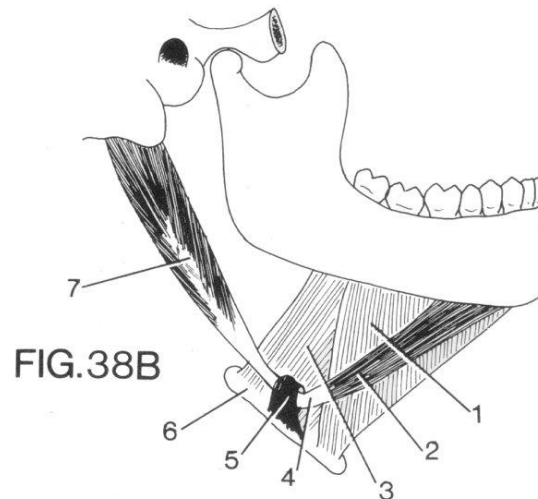
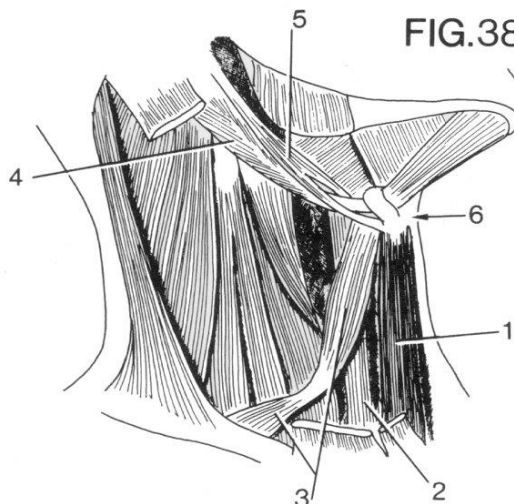
# Infrahyoide muskler (nedre)

- *m. thyreohyoideus*
  - udspring:
    - cartilago thyreoidea
  - tilhæftning:
    - os hyoideum
  - n. fra plexus cervicalis  
(alle infrahyoide m.)



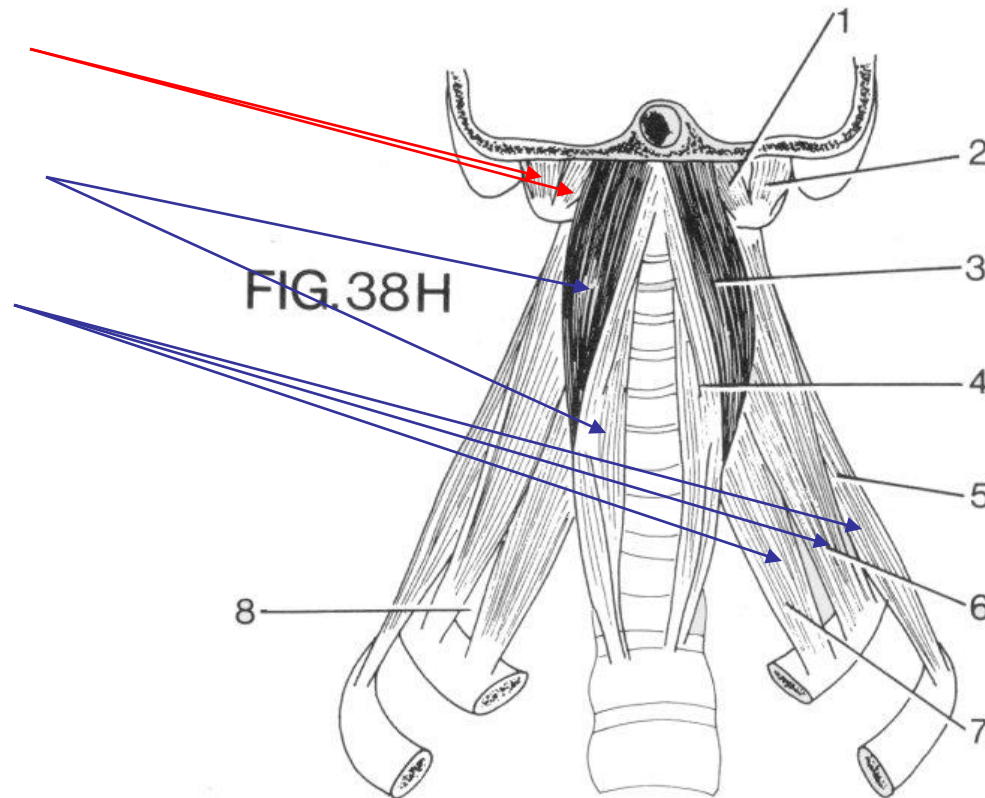
# Punctum fixum kigger vi på senere..

Når de infrahyoide muskler trækker nedad i os hyoideum, og venter posterior m. digastrici og m. stylohyoideus fra de suprahyoide muskler samtidig trækker opad, vil resten af de suprahyoide muskler, dvs venter anterior m. digtrici, m. mylohyoideus og m. geniohyoideus, bruge det fikserede os hyoideum som punctum fixum og dermed deltage i åbnebevægelser, idet de trækker nedad i mandibula.



# Prævertebralmuskler her oversigt

- to korte
- to lange
- tre skrå



# Korte Prævertebralmuskler

forbinder atlas med kraniet

- m. rectus capitis anterior
- m. rectus capitis lateralis



# Korte Prævertebralmuskler

- m. rectus capitis anterior
  - udspring:
    - basis cranii
  - tilhæftning:
    - atlas

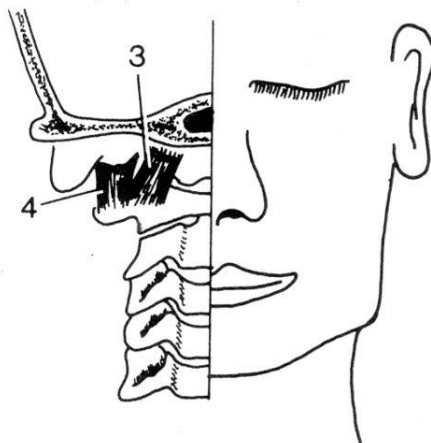
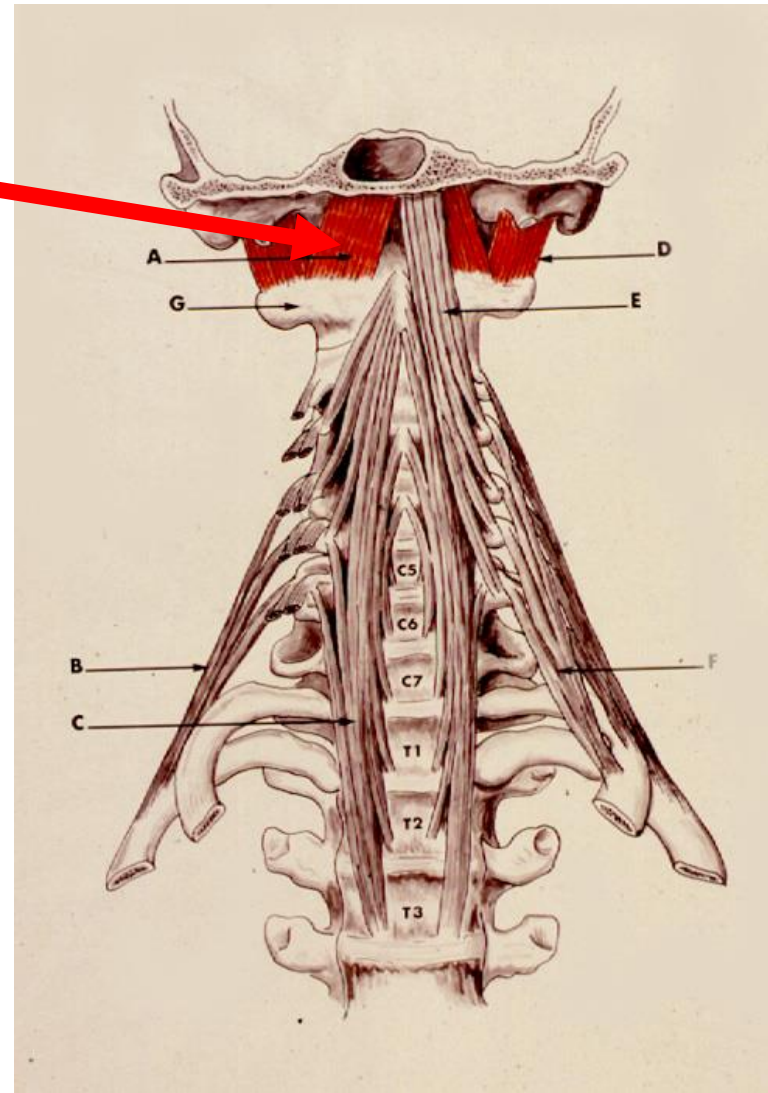


FIG. 36



# Korte Prævertebralmuskler

- m. rectus capitis lateralis
  - udspring:
    - basis cranii
  - tilhæftning:
    - tværtap på atlas

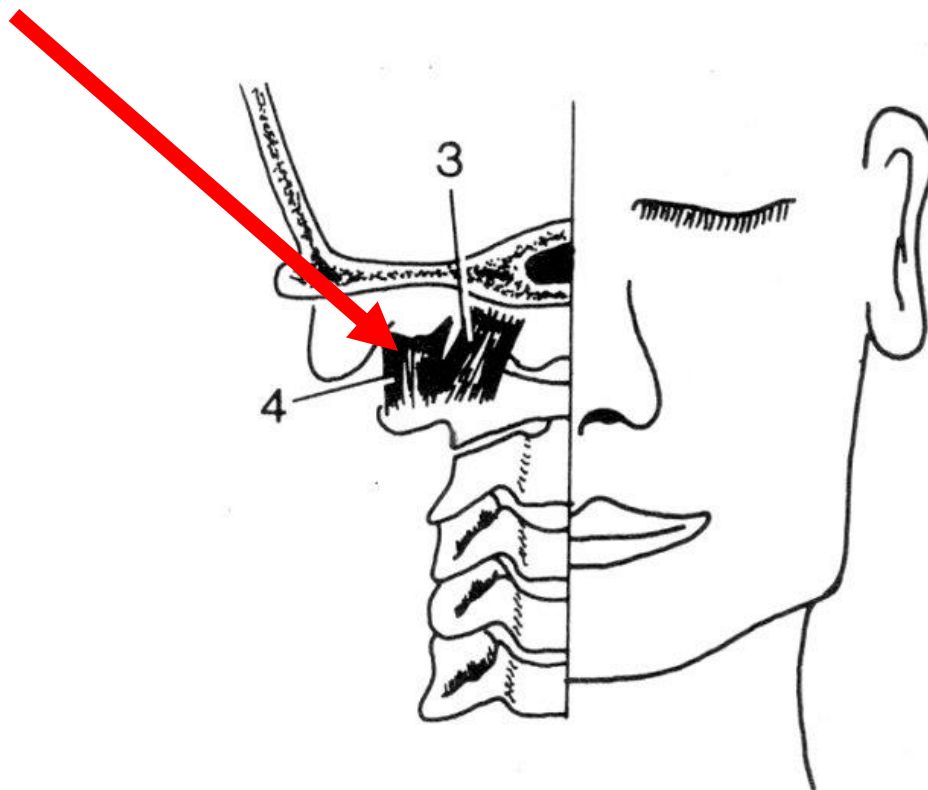


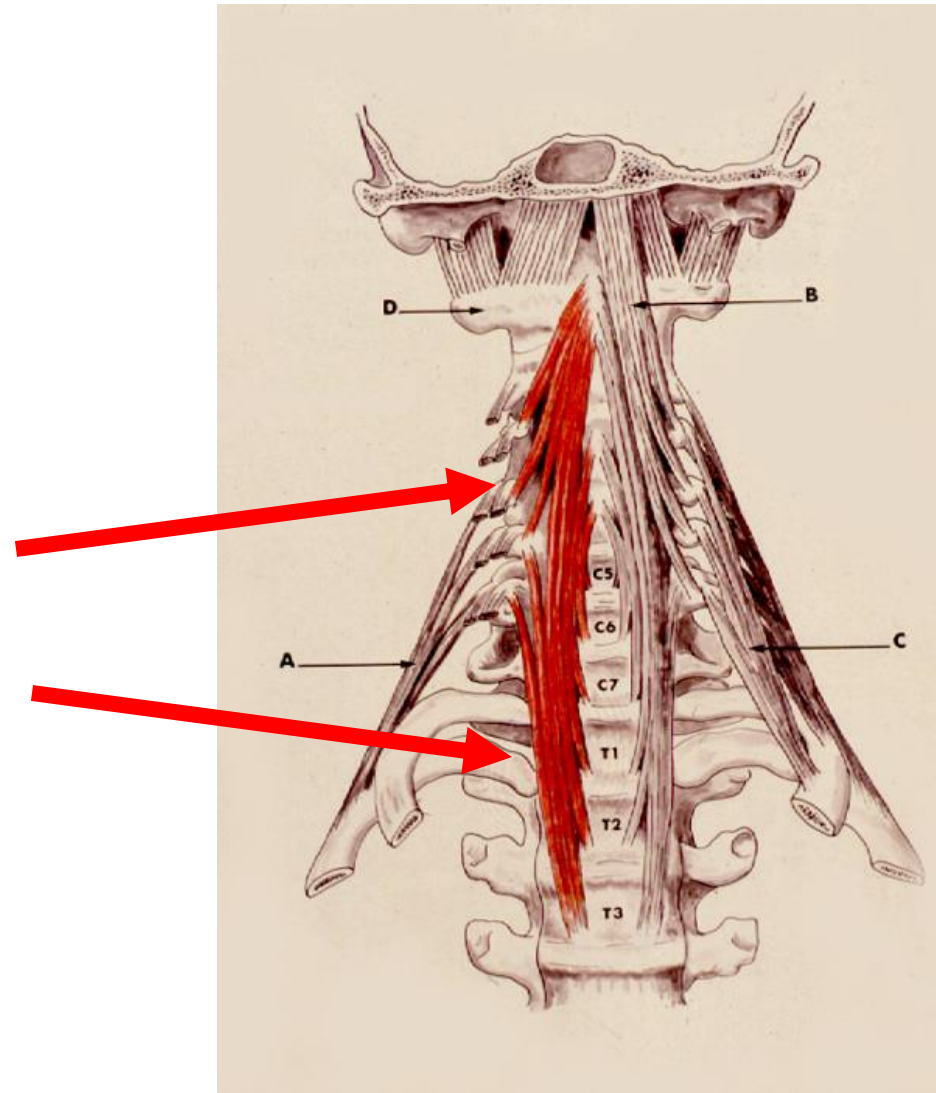
FIG. 36

# Lange Prævertebralmuskler

- den lange halsmuskel
- den lange hovedmuskel

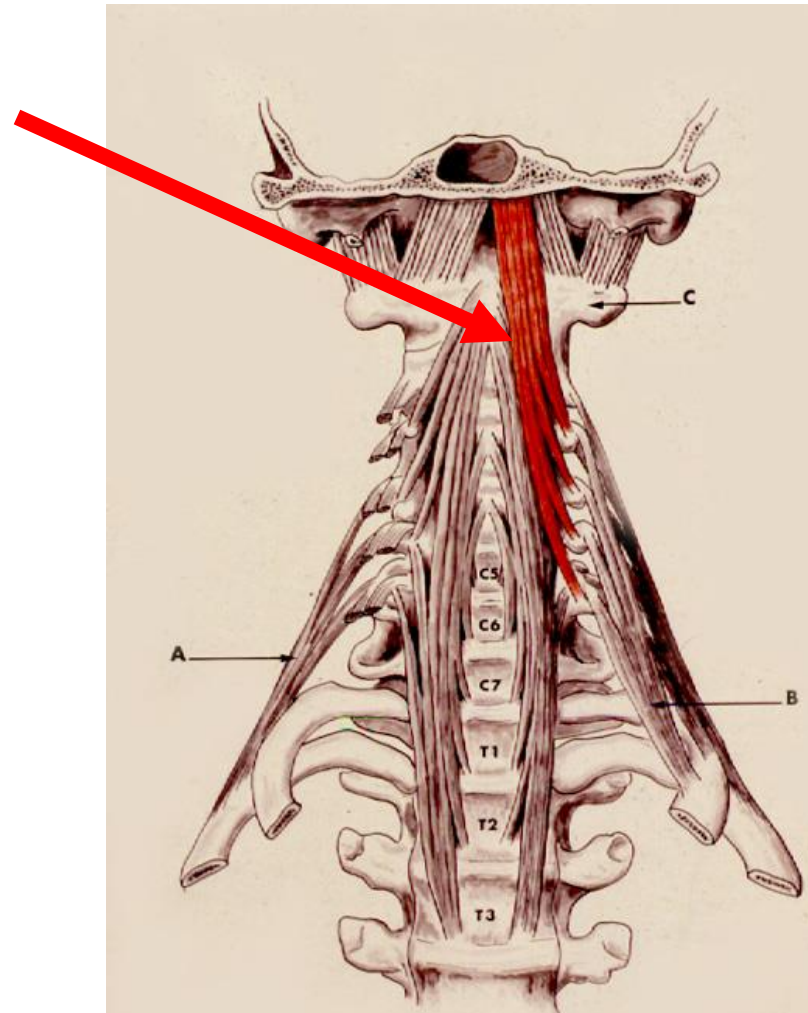
# Lange Prævertebralmuskler

- *m. longus colli*
- den lange halsmuskel
  - forbinder hvirvler



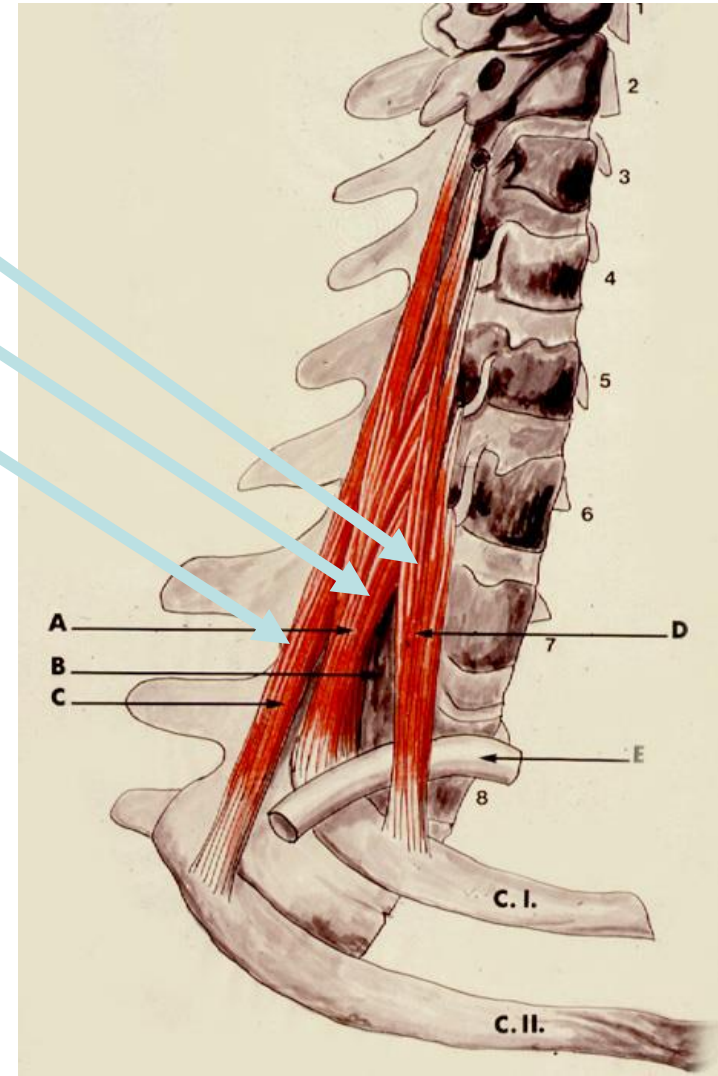
# Lange Prævertebralmuskler

- *m. longus capitis*
- den lange hovedmuskel
  - udspring:
    - fra nederste halshvirvlers tværtappe
  - tilhæftning:
    - basis cranii
    - foran foramen magnum



# Skrå Prævertebralmuskler

- m. scalenus anterior
- m. scalenus medius
- m. scalenus posterior
  - udspring
    - halshvirvlers tværtappe
  - tilhæftning
    - 1./2. Ribben
  - innervation:
    - plexus cervicalis
    - plexus brachialis

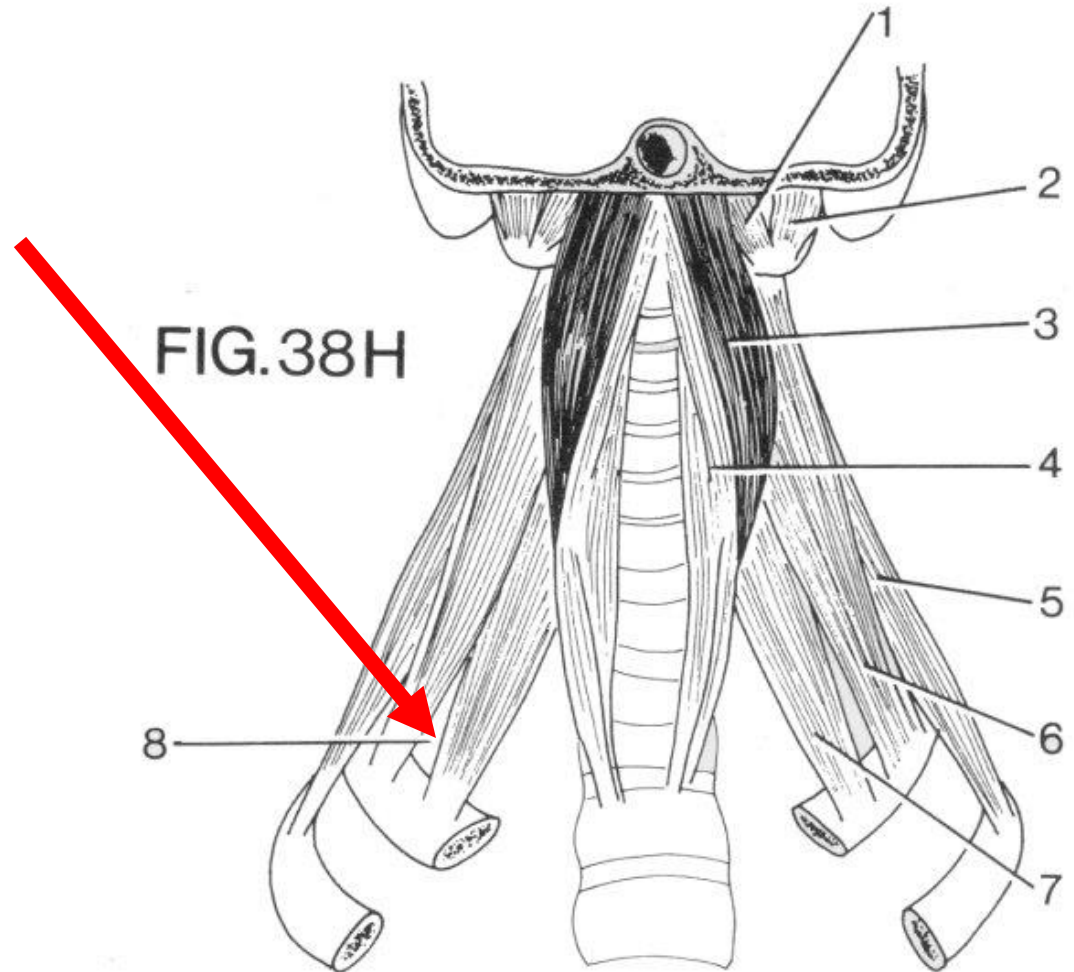




# ”Scalenerporten”

forbinder:

- ☞ brysthule og hals
- ☞ brysthule og  
extremitet



# HALSENS FASCIER

## *Lamina superficialis*

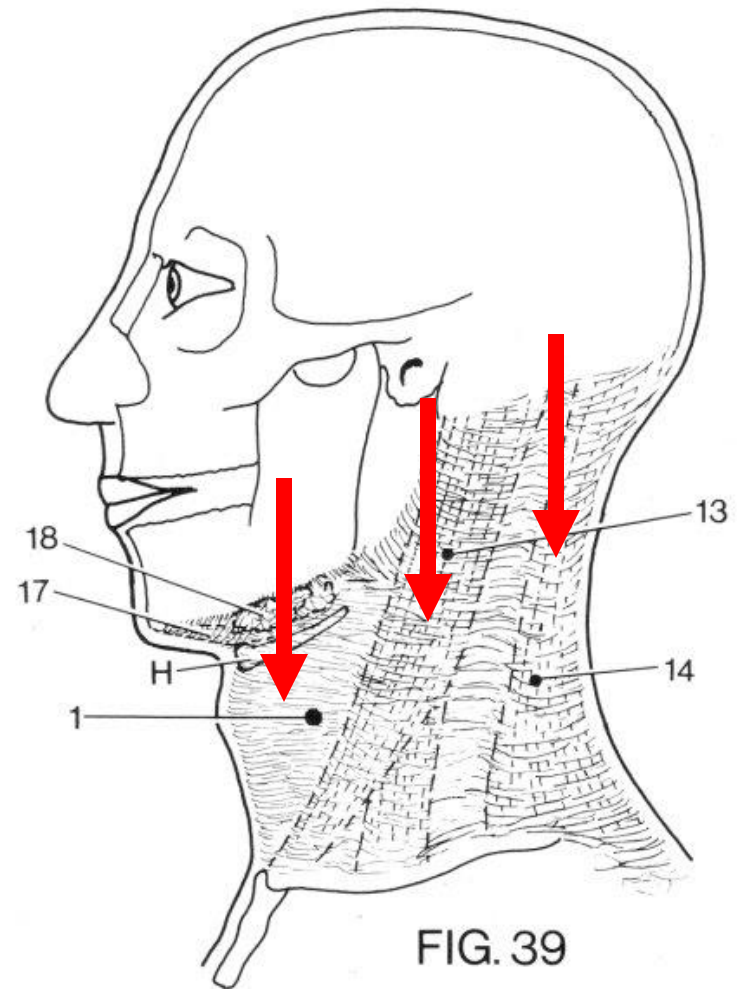


FIG. 39



# Halsens fascier

- lamina superficialis

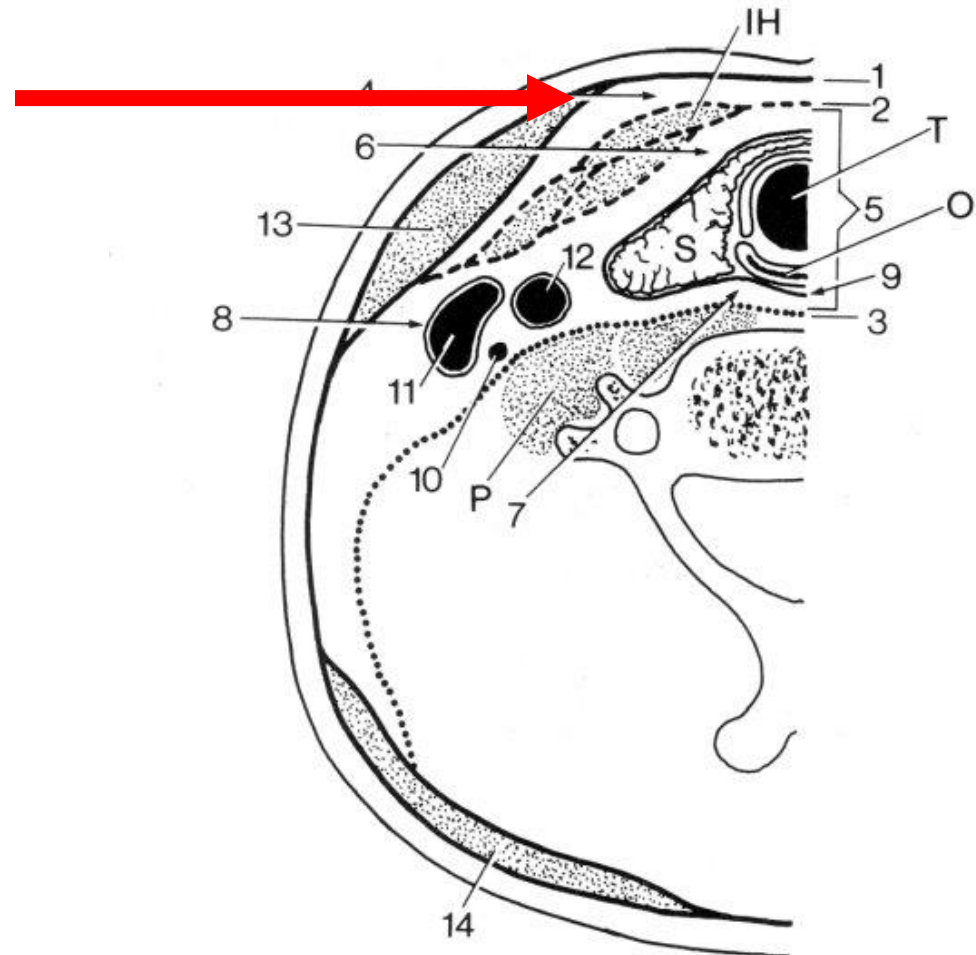


FIG.42

# Halsens fascier

- lamina superficialis
- lamina pretrachealis
- lamina prevertebralis

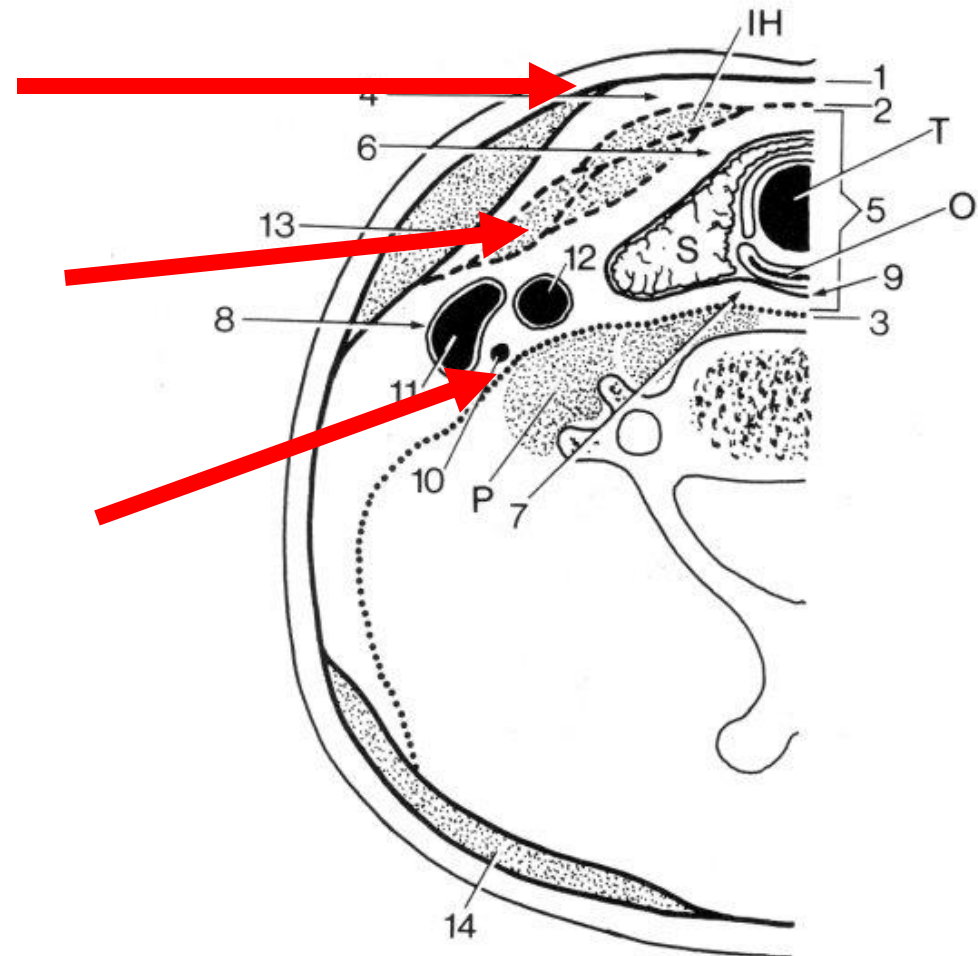
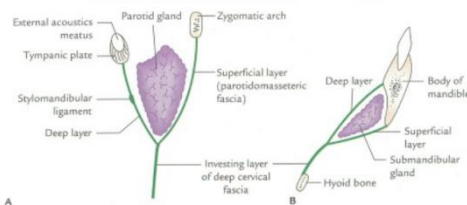
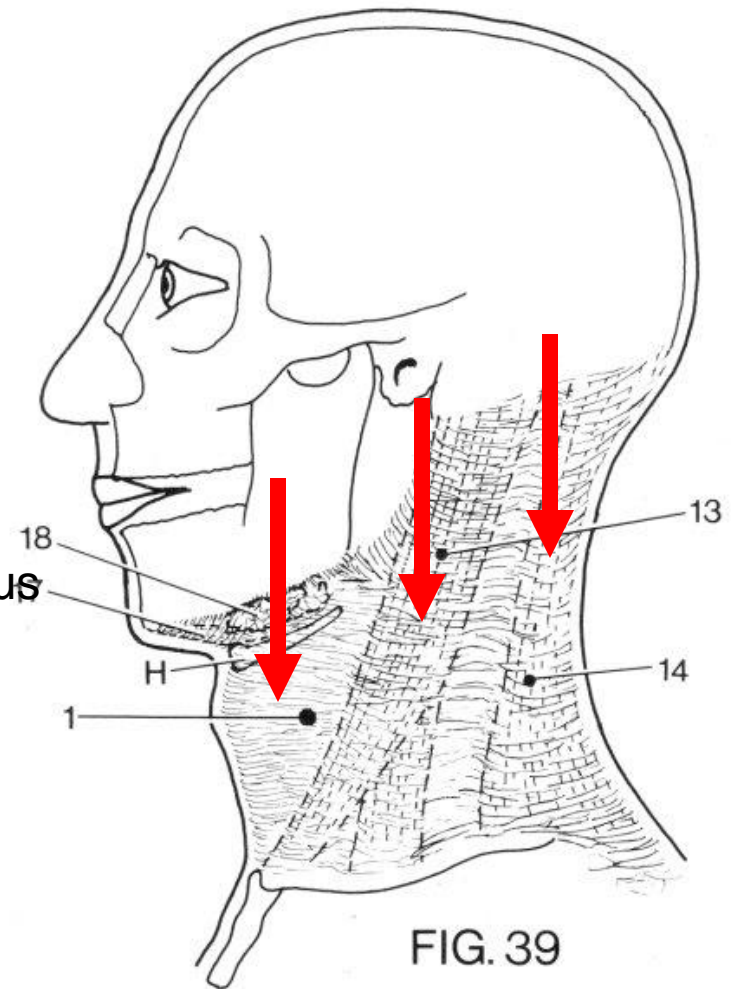


FIG. 42

# HALSENS FASCIER

## *Lamina superficialis*

- fra:
  - sternum og clavicula
  - rygfascien
- til:
  - basis mandibulae
  - linea nuchalis superior
- omskeder:
  - m. sternocleidomastoideus
  - m. trapezius
  - venter anterior af m. digastricus
  - gld. submandibularis

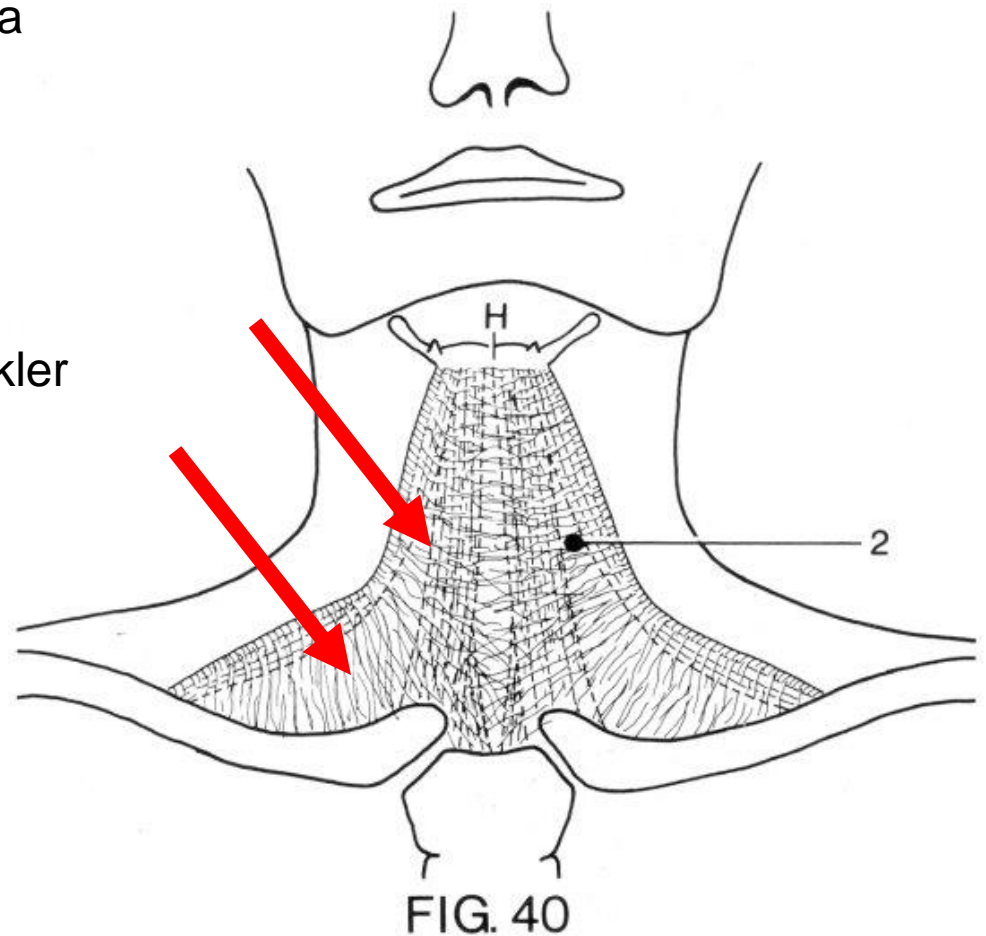


Investing layer of deep cervical fascia enclosing two glands: A, parotid gland; B, submandibular gland.

# HALSENS FASCIER

## *Lamina pretrachealis*

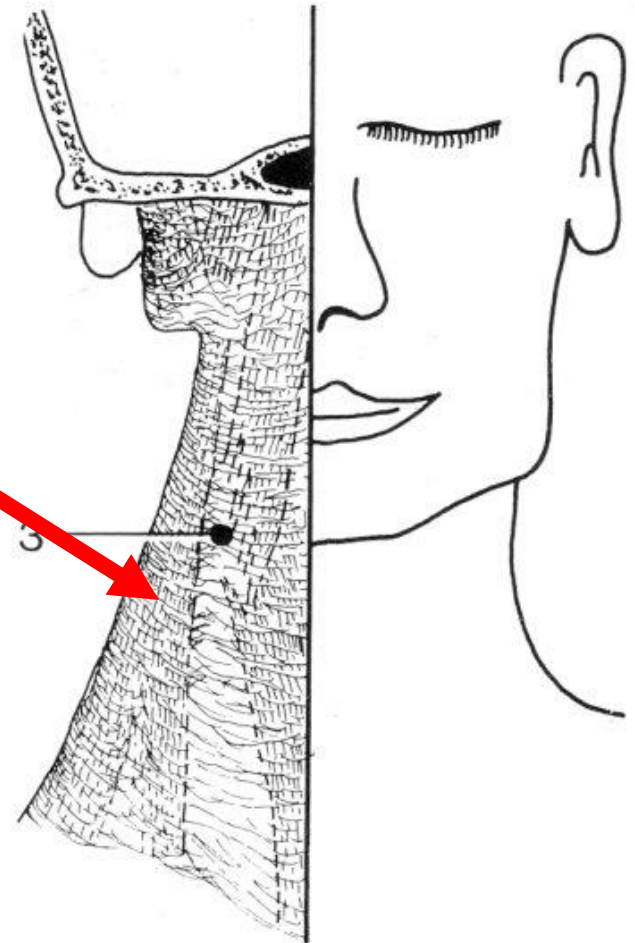
- fra:
  - sternum og clavicula
- til:
  - os hyoideum
- omskeder:
  - de infrahyoide muskler



# HALSENS FASCIER

## *Lamina prevertebralis*

- udenom:
  - prevertebralmusklerne
- fra:
  - basis cranii
- til:
  - øverste brystvirvler



# Halsfascier

Lamina superficialis

Lamina pretrachealis

Lamina prevertebralis

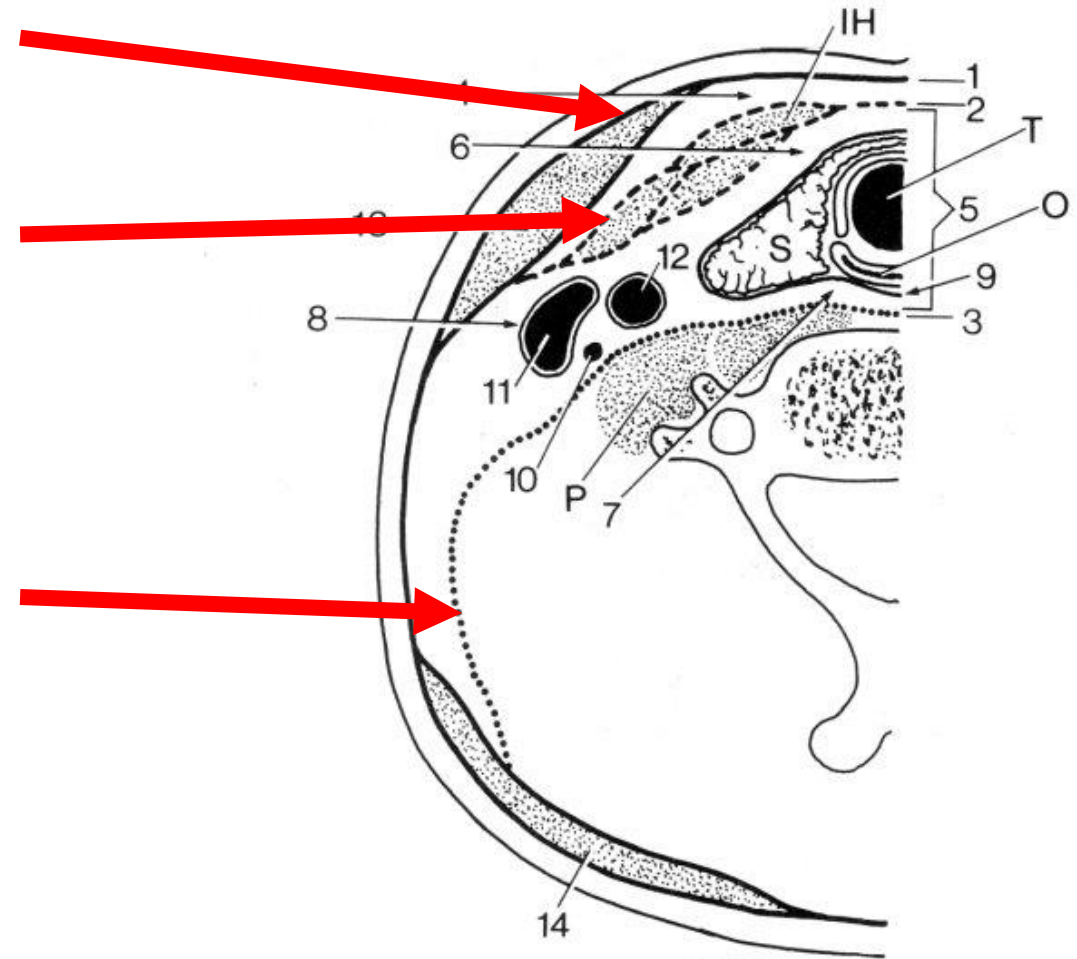


FIG.42

# Rum mellem halsfascier

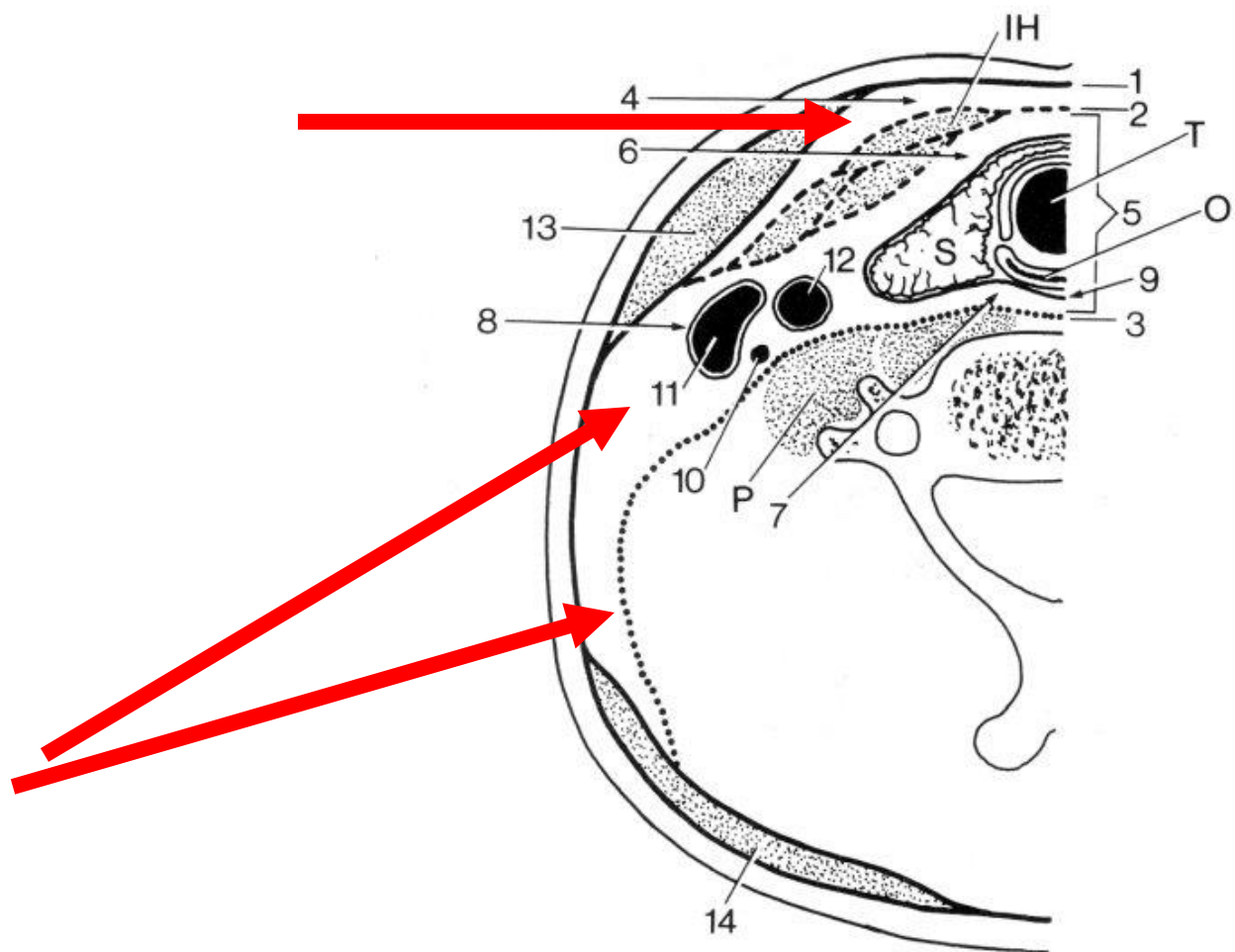


FIG.42



# Bindevævsrum

- Spatium interfasciale
  - mellem:
    - lamina superficialis
    - lamina pretrachealis
  - indhold:
    - løst bindevæv

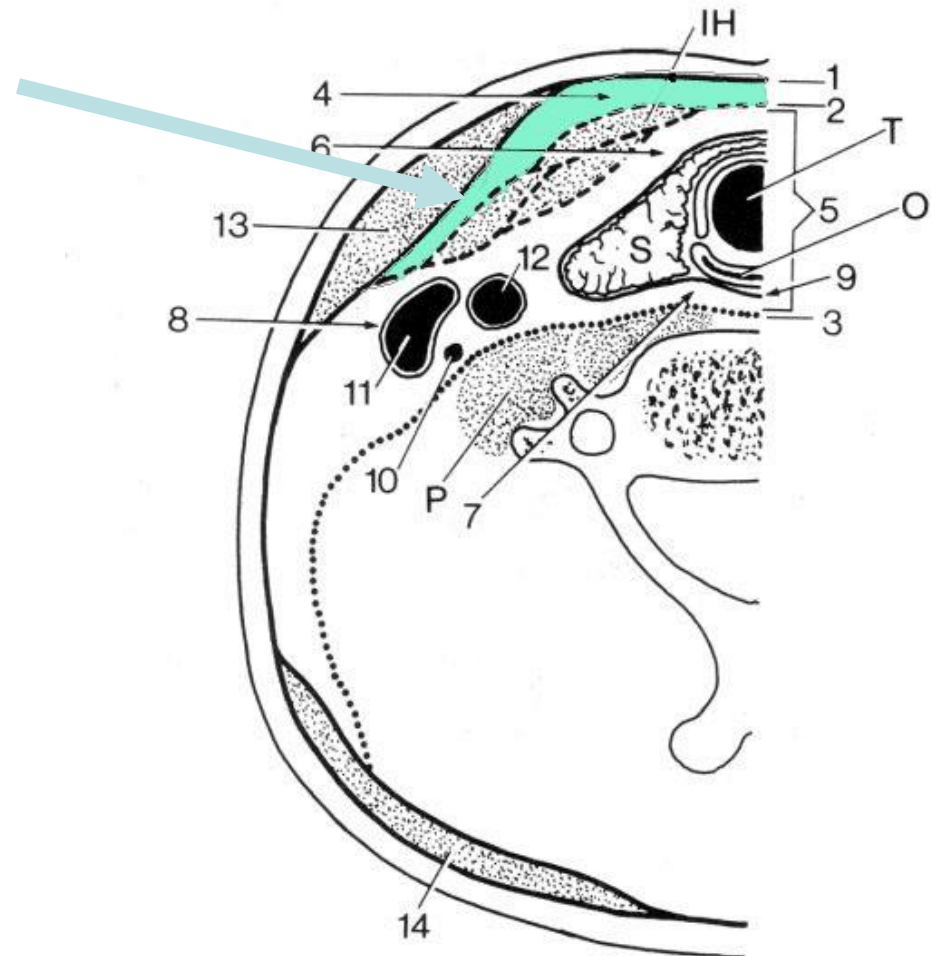


FIG.42



# Bindevævsrum

- **Spatium viscerale**
  - Omfatter viscera
  - Og bindevæv omkring viscera: spatium peripharyngeum

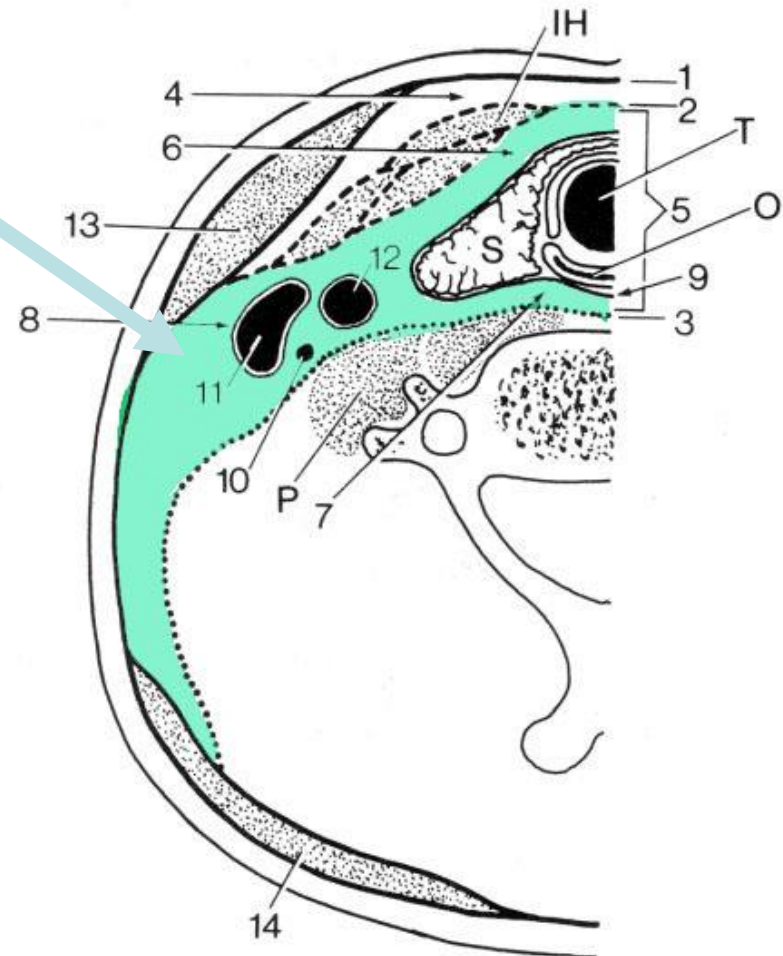


FIG.42

# Bindevævsrum

- Spatium viscerale
  - begrænsninger
    - lamina pretrachealis
    - lamina superficialis
    - lamina prevertebralis
  - indhold:
    - » spiserør og luftrør
    - » skjoldbruskkirtel
    - » Bindevæv, spatium peripharyngeum

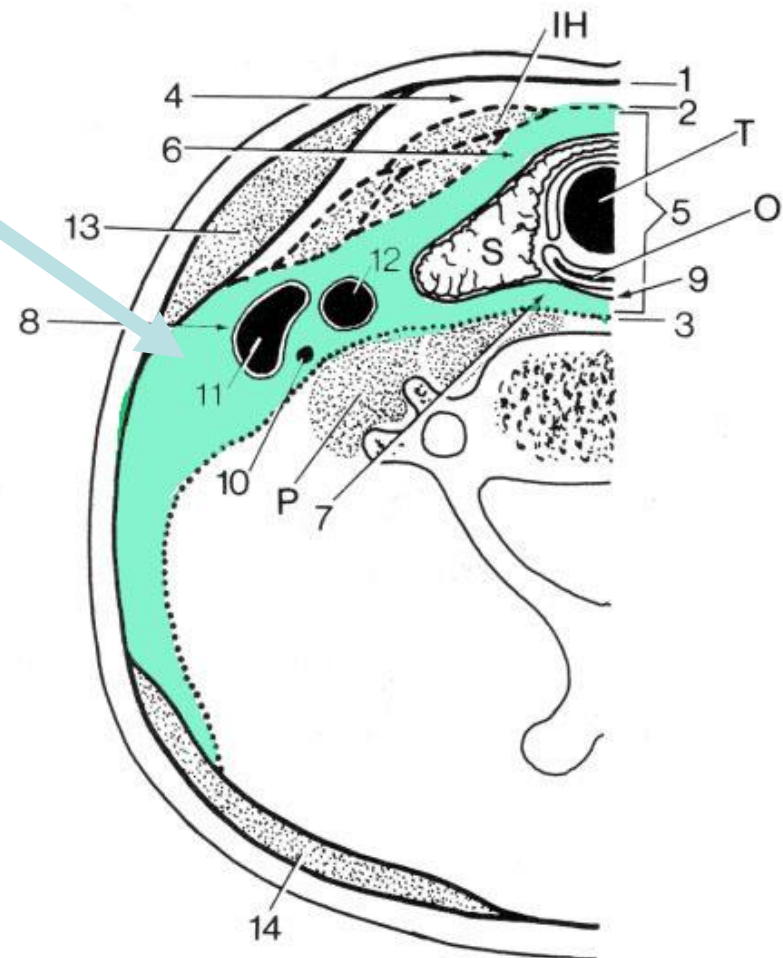
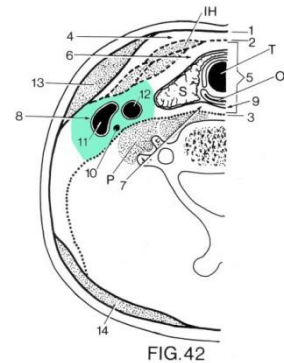
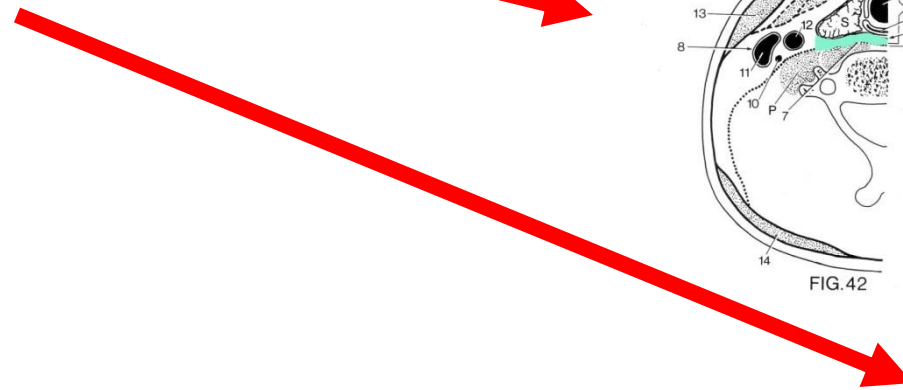
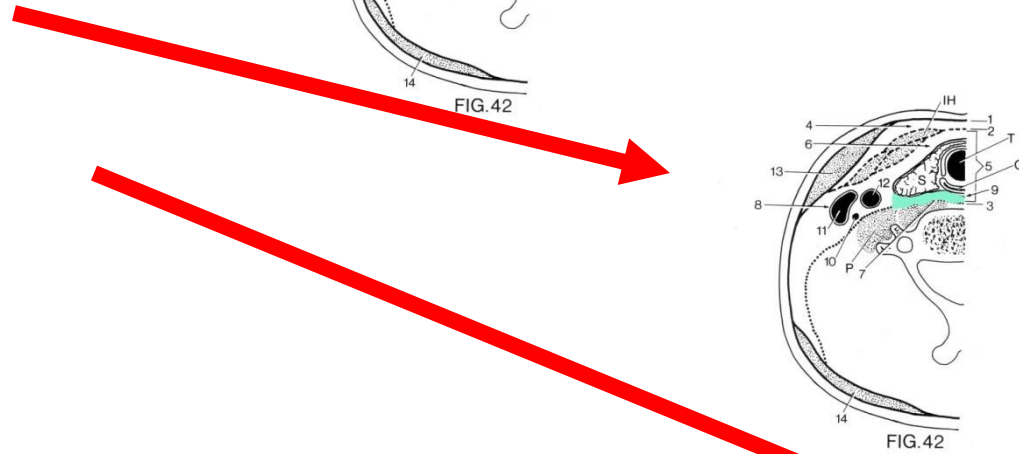
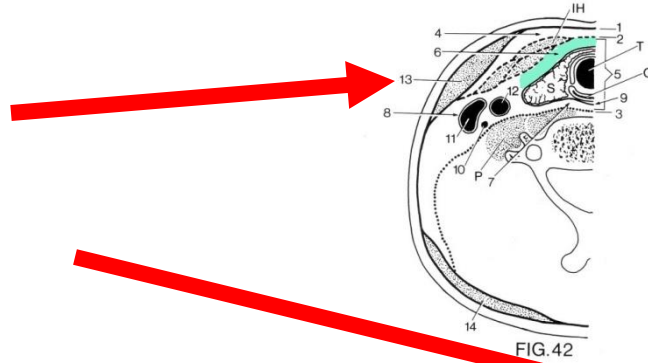


FIG.42

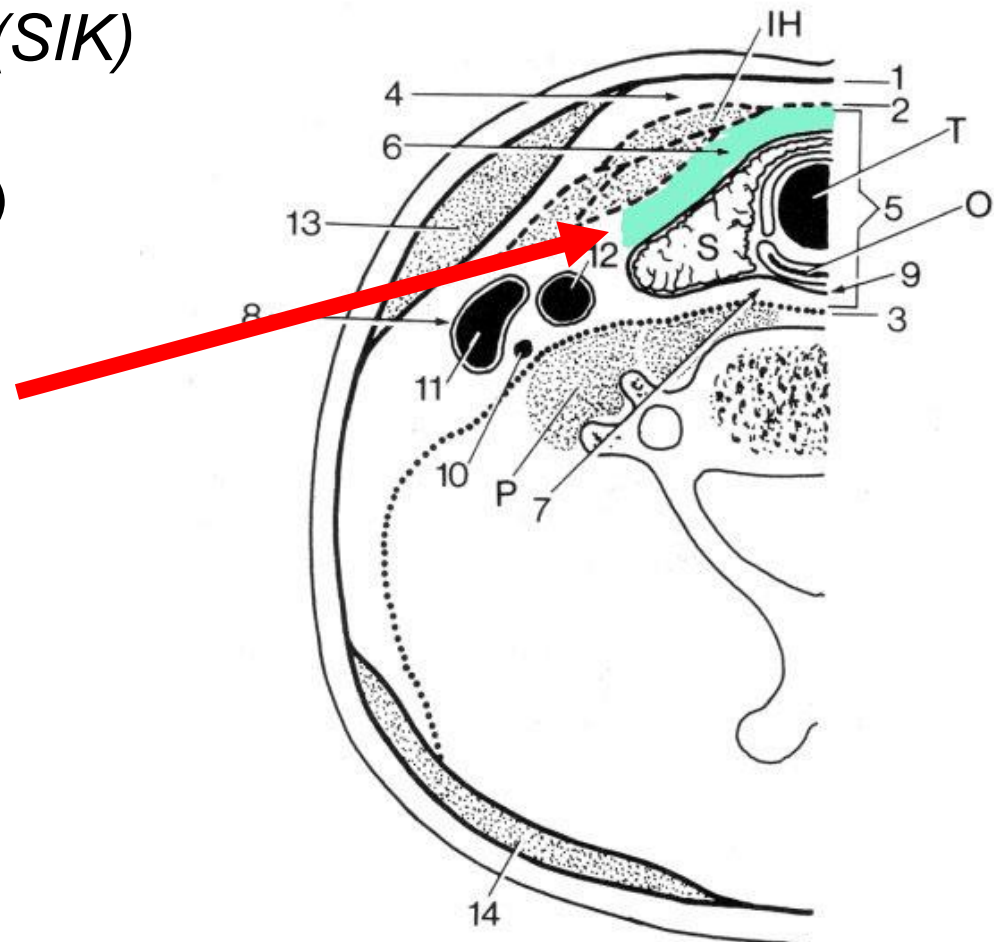
# Bindevæv omkring halsviscera

- foran
- bagved
- lateralt



# Bindevæv omkring halsviscera

- *spatium prepharyngeum (SIK)*  
bindevæv foran viscera  
(spatium previscerale i index)



# Bindevæv omkring halsviscera

- *spatium retropharyngeum*  
bindevæv bag viscera

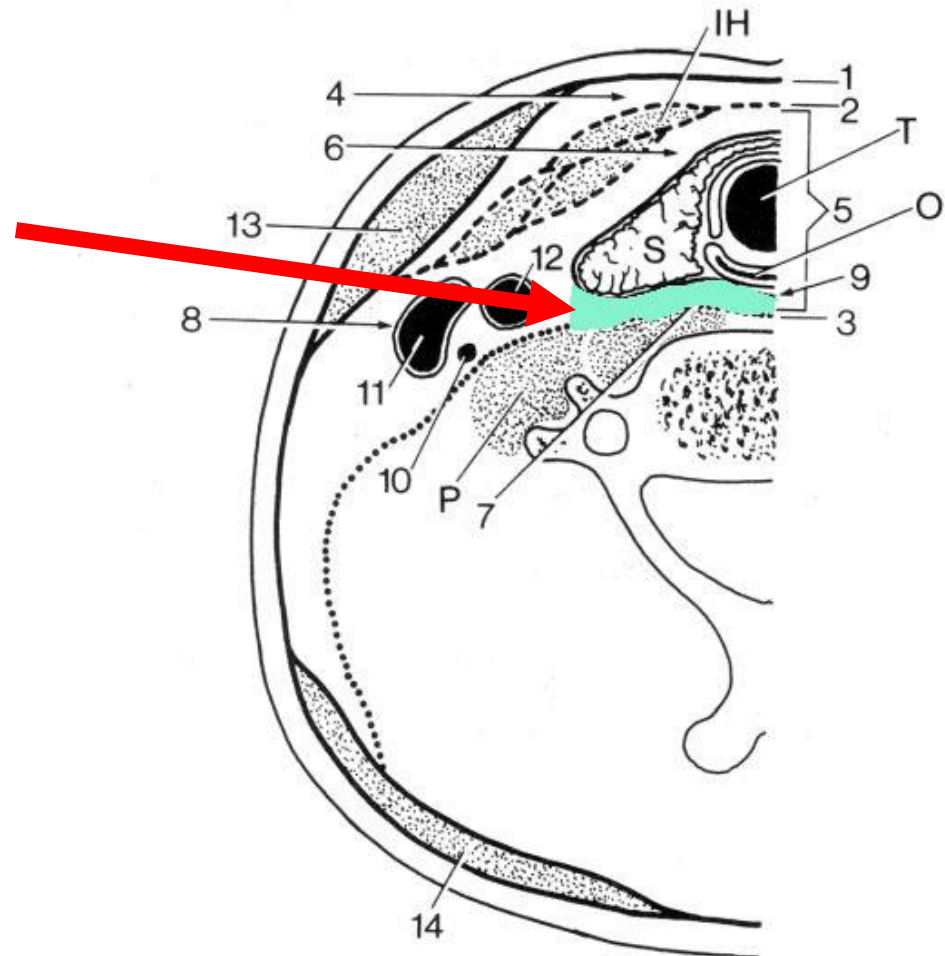
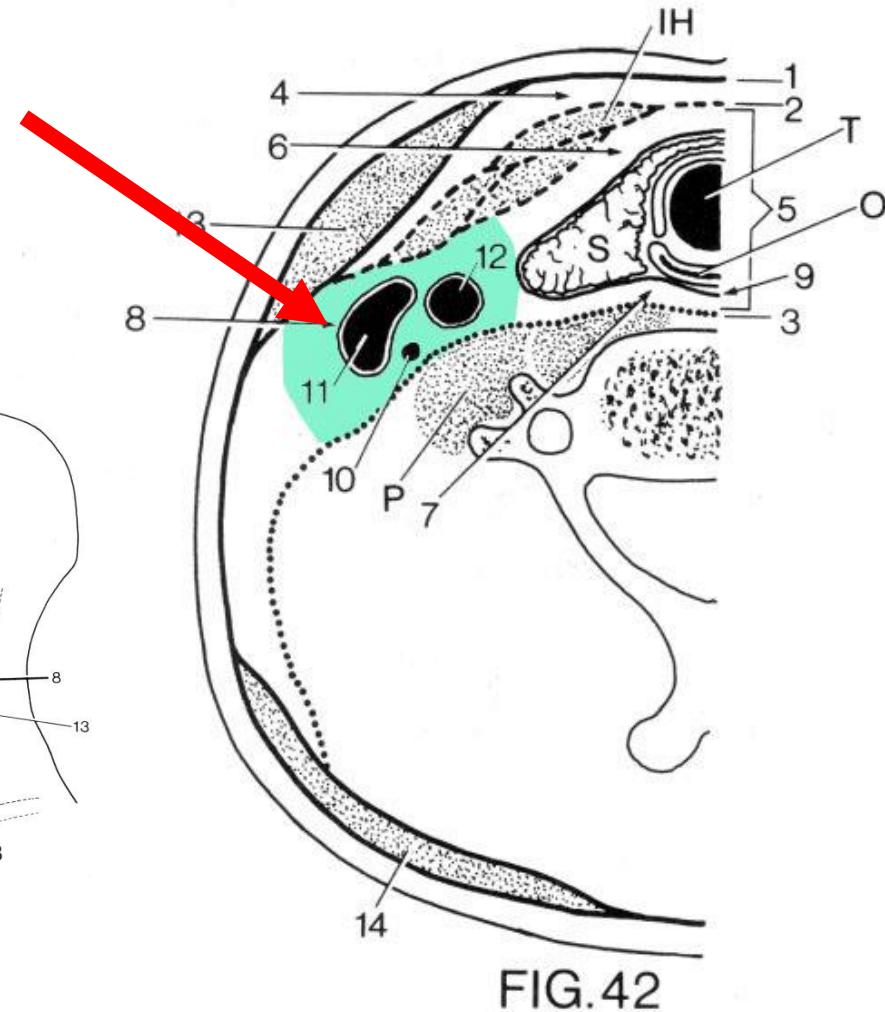
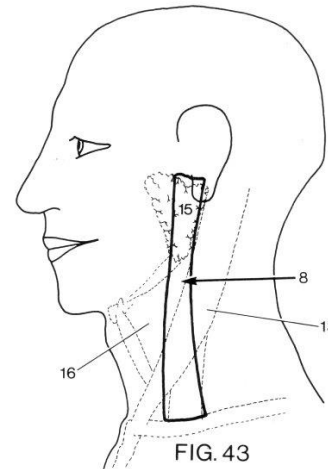


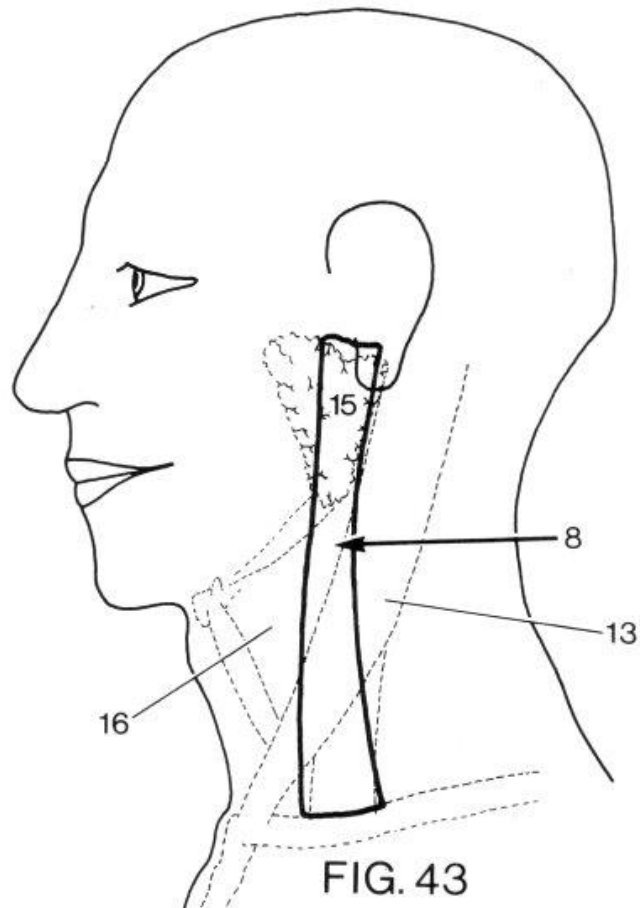
FIG. 42

# Bindevæv omkring halsviscera

- *spatium lateropharyngeum*  
(*spatium parapharyngeum*)  
bindevævssøjle  
fra apertura thoracis sup.  
til basis cranii  
med kar, nerver







# Halsens bindevævsrum

## - se museumsprogram (podcast)







# eMuseum

- **m. digastricus** [Aa2-202](#) (39-8) (40-7)  
[Aa2-30](#) (24-14)
- **m. digastricus, venter anterior**  
[Aa2-66](#) (24-2)
- **m. digastricus, venter posterior**  
[Aa2-66](#) (24-2)  
[Aa1-16](#) (23-3)
- **m. mylohyoideus**  
[Aa2-30](#) (24-14)
- **Gld. submandibularis**